

ZNF624 Antibody (Center)

Purified Rabbit Polyclonal Antibody (Pab)

Catalog # Azb18709c

Product Information

Application	WB, E
Primary Accession	Q9P2J8
Reactivity	Human
Host	Rabbit
Clonality	Polyclonal
Isotype	Rabbit IgG
Clone Names	RB49588
Calculated MW	99929

Additional Information

Gene ID	57547
Other Names	Zinc finger protein 624, ZNF624, KIAA1349
Target/Specificity	This ZNF624 antibody is generated from a rabbit immunized with a KLH conjugated synthetic peptide between 264-298 amino acids from the Central region of human ZNF624.
Dilution	WB~~1:1000 E~~Use at an assay dependent concentration.
Format	Purified polyclonal antibody supplied in PBS with 0.09% (W/V) sodium azide. This antibody is purified through a protein A column, followed by peptide affinity purification.
Storage	Maintain refrigerated at 2-8°C for up to 2 weeks. For long term storage store at -20°C in small aliquots to prevent freeze-thaw cycles.
Precautions	ZNF624 Antibody (Center) is for research use only and not for use in diagnostic or therapeutic procedures.

Protein Information

Name	ZNF624
Synonyms	KIAA1349
Function	May be involved in transcriptional regulation.
Cellular Location	Nucleus.

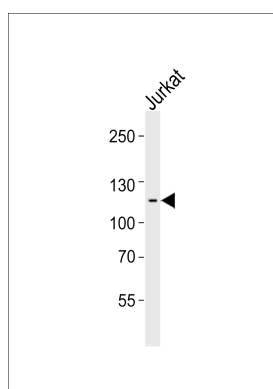
Background

May be involved in transcriptional regulation.

References

Nagase T.,et al.DNA Res. 7:65-73(2000).
Ota T.,et al.Nat. Genet. 36:40-45(2004).
Zody M.C.,et al.Nature 440:1045-1049(2006).
Sjoebloom T.,et al.Science 314:268-274(2006).

Images



Western blot analysis of lysate from Jurkat cell line, using ZNF624 Antibody (Center)(Cat. #Azb18709c). Azb18709c was diluted at 1:1000. A goat anti-rabbit IgG H&L(HRP) at 1:5000 dilution was used as the secondary antibody. Lysate at 35ug.

Please note: All products are 'FOR RESEARCH USE ONLY. NOT FOR USE IN DIAGNOSTIC OR THERAPEUTIC PROCEDURES'.