

DANRE irf2bp2a Antibody (Center)

Affinity Purified Rabbit Polyclonal Antibody (Pab)

Catalog # Azb10034a

Product Information

Application	WB, E
Primary Accession	Q6NZT6
Reactivity	Zebrafish
Host	Rabbit
Clonality	Polyclonal
Isotype	Rabbit IgG
Calculated MW	52888
Antigen Region	238-260

Additional Information

Gene ID	335866
Other Names	Interferon regulatory factor 2-binding protein 2-A, IRF-2-binding protein 2-A, IRF-2BP2-A, irf2bp2a
Target/Specificity	This DANRE irf2bp2a antibody is generated from rabbits immunized with a KLH conjugated synthetic peptide between 238-260 amino acids from the Central region of DANRE irf2bp2a.
Dilution	WB~~1:1000 E~~Use at an assay dependent concentration.
Format	Purified polyclonal antibody supplied in PBS with 0.09% (W/V) sodium azide. This antibody is purified through a protein A column, followed by peptide affinity purification.
Storage	Maintain refrigerated at 2-8°C for up to 2 weeks. For long term storage store at -20°C in small aliquots to prevent freeze-thaw cycles.
Precautions	DANRE irf2bp2a Antibody (Center) is for research use only and not for use in diagnostic or therapeutic procedures.

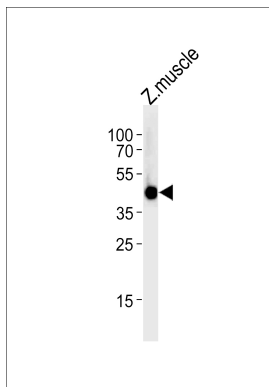
Protein Information

Name	irf2bp2a
Function	Acts as a transcriptional repressor.
Cellular Location	Nucleus.

Background

Acts as a transcriptional repressor (By similarity).

Images



DANRE irf2bp2a Antibody (Center) (Cat. #Azb10034a) western blot analysis in zebra fish muscle tissue lysates (35ug/lane). This demonstrates the DANRE irf2bp2a antibody detected the DANRE irf2bp2a protein (arrow).

Please note: All products are 'FOR RESEARCH USE ONLY. NOT FOR USE IN DIAGNOSTIC OR THERAPEUTIC PROCEDURES'.