

DANRE tcf21 Antibody (N-term)

Affinity Purified Rabbit Polyclonal Antibody (Pab)

Catalog # Azb10030a

Product Information

Application	WB, E
Primary Accession	Q32PV5
Reactivity	Zebrafish
Host	Rabbit
Clonality	Polyclonal
Isotype	Rabbit IgG
Calculated MW	19346
Antigen Region	5-35

Additional Information

Gene ID	558148
Other Names	Transcription factor 21 {ECO:0000312 EMBL:AAI079691}, TCF-21, Capsulin {ECO:0000312 EMBL:ABU954061}, Epicardin, MyoRa2, TCF21
Target/Specificity	This DANRE tcf21 antibody is generated from rabbits immunized with a KLH conjugated synthetic peptide between 5-35 amino acids from the N-terminal region of DANRE tcf21.
Dilution	WB~~1:1000 E~~Use at an assay dependent concentration.
Format	Purified polyclonal antibody supplied in PBS with 0.09% (W/V) sodium azide. This antibody is purified through a protein A column, followed by peptide affinity purification.
Storage	Maintain refrigerated at 2-8°C for up to 2 weeks. For long term storage store at -20°C in small aliquots to prevent freeze-thaw cycles.
Precautions	DANRE tcf21 Antibody (N-term) is for research use only and not for use in diagnostic or therapeutic procedures.

Protein Information

Name	TCF21
Function	Involved in epithelial-mesenchymal interactions in kidney and lung morphogenesis that include epithelial differentiation and branching morphogenesis.
Cellular Location	Nucleus {ECO:0000250 UniProtKB:O43680,

Tissue Location

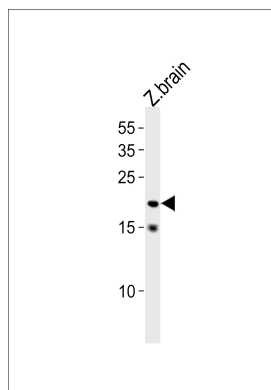
Expressed in the cranial paraxial mesoderm from 20 hpf and subsequently becomes restricted to the pharyngeal mesoderm that will form the muscle. Expression in the proepicardial organ is first seen at 40hpf in a cluster of cells between the myocardium and yolk. Also expressed in the developing arches. Expression begins to surround the heart by day 3 of development, and by 96 hpf, expression is restricted to the outer epicardial layer surrounding the myocardium.

Background

Involved in epithelial-mesenchymal interactions in kidney and lung morphogenesis that include epithelial differentiation and branching morphogenesis (By similarity).

References

Wang Y., et al. J. Mol. Evol. 68:629-640(2009).
Chang M.-Y., et al. Submitted (MAY-2007) to the EMBL/GenBank/DDBJ databases.
Serluca F.C., et al. Dev. Biol. 315:18-27(2008).
Knight R.D., et al. J. Exp. Zool. B Mol. Dev. Evol. 310:355-369(2008).

Images

DANRE tcf21 Antibody (N-term) (Cat. #Azb10030a) western blot analysis in zebra fish brain tissue lysates (35ug/lane). This demonstrates the DANRE tcf21 antibody detected the DANRE tcf21 protein (arrow).

Please note: All products are 'FOR RESEARCH USE ONLY. NOT FOR USE IN DIAGNOSTIC OR THERAPEUTIC PROCEDURES'.