

DANRE selm Antibody (C-term)

Affinity Purified Rabbit Polyclonal Antibody (Pab)

Catalog # Azb10029b

Product Information

Application	WB, E
Primary Accession	Q802G7
Reactivity	Zebrafish
Host	Rabbit
Clonality	Polyclonal
Isotype	Rabbit IgG
Calculated MW	17172
Antigen Region	96-119

Additional Information

Other Names	Selenoprotein M, SePM, SelM, selm, sepm
Target/Specificity	This DANRE selm antibody is generated from rabbits immunized with a KLH conjugated synthetic peptide between 96-119 amino acids from the C-terminal region of DANRE selm.
Dilution	WB~~1:1000 E~~Use at an assay dependent concentration.
Format	Purified polyclonal antibody supplied in PBS with 0.09% (W/V) sodium azide. This antibody is purified through a protein A column, followed by peptide affinity purification.
Storage	Maintain refrigerated at 2-8°C for up to 2 weeks. For long term storage store at -20°C in small aliquots to prevent freeze-thaw cycles.
Precautions	DANRE selm Antibody (C-term) is for research use only and not for use in diagnostic or therapeutic procedures.

Protein Information

Name	Selenom {ECO:0000250 UniProtKB:Q8WWX9}
Function	May function as a thiol-disulfide oxidoreductase that participates in disulfide bond formation.
Tissue Location	During early embryogenesis, abundantly expressed within the notochord and anterior somites. At later stages, accumulates within the axial fin fold, dorsal spinal cord neurons, then in lateral line neuromasts.

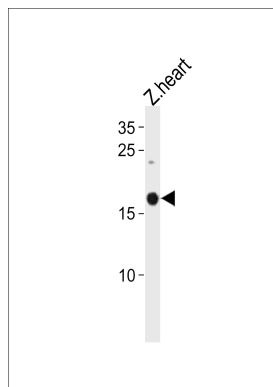
Background

May function as a thiol-disulfide oxidoreductase that participates in disulfide bond formation (By similarity).

References

Thisse C., et al. Gene Expr. Patterns 3:525-532(2003).

Images



DANRE selm Antibody (C-term) (Cat. #Azb10029b)
western blot analysis in zebra fish heart tissue lysates
(35ug/lane). This demonstrates the DANRE selm antibody
detected the DANRE selm protein (arrow).

Please note: All products are 'FOR RESEARCH USE ONLY. NOT FOR USE IN DIAGNOSTIC OR THERAPEUTIC PROCEDURES'.