

# DANRE ccdc89 Antibody (C-term)

Affinity Purified Rabbit Polyclonal Antibody (Pab)

Catalog # Azb10026b

## Product Information

Application	WB, E
Primary Accession	<a href="#">A8WG43</a>
Reactivity	Zebrafish
Host	Rabbit
Clonality	Polyclonal
Isotype	Rabbit IgG
Calculated MW	42156
Antigen Region	265-293

## Additional Information

Gene ID	100136847
Other Names	Coiled-coil domain-containing protein 89, Bc8 orange-interacting protein, ccdc89 {ECO:0000250 UniProtKB:Q8N998}
Target/Specificity	This DANRE ccdc89 antibody is generated from rabbits immunized with a KLH conjugated synthetic peptide between 265-293 amino acids from the C-terminal region of DANRE ccdc89.
Dilution	WB~~1:1000 E~~Use at an assay dependent concentration.
Format	Purified polyclonal antibody supplied in PBS with 0.09% (W/V) sodium azide. This antibody is purified through a protein A column, followed by peptide affinity purification.
Storage	Maintain refrigerated at 2-8°C for up to 2 weeks. For long term storage store at -20°C in small aliquots to prevent freeze-thaw cycles.
Precautions	DANRE ccdc89 Antibody (C-term) is for research use only and not for use in diagnostic or therapeutic procedures.

## Protein Information

Name	ccdc89 {ECO:0000250 UniProtKB:Q8N998}
Cellular Location	Cytoplasm {ECO:0000250 UniProtKB:Q7ZW57}. Nucleus {ECO:0000250 UniProtKB:Q7ZW57}. Note=Uniformly distributed within the cell, but becomes recruited to the nucleus upon binding to hey1

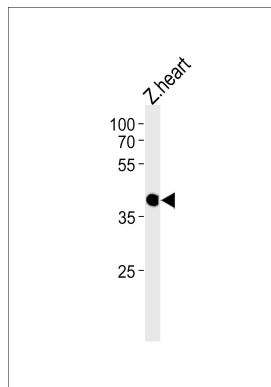
## References

---

Van Wayenbergh R., et al. Dev. Dyn. 228:716-725(2003).

## Images

---



DANRE ccdc89 Antibody (C-term) (Cat. #Azb10026b) western blot analysis in zebra fish heart tissue lysates (35ug/lane). This demonstrates the DANRE ccdc89 antibody detected the DANRE ccdc89 protein (arrow).

Please note: All products are 'FOR RESEARCH USE ONLY. NOT FOR USE IN DIAGNOSTIC OR THERAPEUTIC PROCEDURES'.