

DANRE pax2a Antibody (Center)

Affinity Purified Rabbit Polyclonal Antibody (Pab)

Catalog # Azb10018a

Product Information

Application	WB, E
Primary Accession	Q90268
Reactivity	Zebrafish
Host	Rabbit
Clonality	Polyclonal
Isotype	Rabbit IgG
Calculated MW	44099
Antigen Region	258-284

Additional Information

Gene ID	30425
Other Names	Paired box protein Pax-2a, No isthmus protein, Pax[Zf-b], pax2a, noi, pax21, paxzf-b
Target/Specificity	This DANRE pax2a antibody is generated from rabbits immunized with a KLH conjugated synthetic peptide between 258-284 amino acids from the Central region of DANRE pax2a.
Dilution	WB~~1:1000 E~~Use at an assay dependent concentration.
Format	Purified polyclonal antibody supplied in PBS with 0.09% (W/V) sodium azide. This antibody is purified through a protein A column, followed by peptide affinity purification.
Storage	Maintain refrigerated at 2-8°C for up to 2 weeks. For long term storage store at -20°C in small aliquots to prevent freeze-thaw cycles.
Precautions	DANRE pax2a Antibody (Center) is for research use only and not for use in diagnostic or therapeutic procedures.

Protein Information

Name	pax2a
Synonyms	noi, pax2.1, paxzf-b
Function	Probable transcription factor involved in the development of the midbrain/hindbrain boundary (MHB) organizer and specification of neuronal cell fates. Required for establishment of eng2 and eng3 gene expression in

the midbrain and MHB primordium during late gastrulation.

Cellular Location

Nucleus.

Tissue Location

Expressed during embryogenesis in the kidney, optic stalk, midbrain, otic vesicle and a row of cells along the spinal cord and the hindbrain

Background

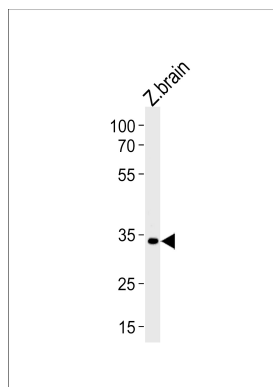
Probable transcription factor involved in the development of the midbrain/hindbrain boundary (MHB) organizer and specification of neuronal cell fates. Required for establishment of eng2 and eng3 gene expression in the midbrain and MHB primordium during late gastrulation.

References

Krauss S., et al. Development 113:1193-1206(1991).

Lun K., et al. Development 125:3049-3062(1998).

Images



DANRE pax2a Antibody (Center) (Cat. #AzB10018a) western blot analysis in zebra fish brain tissue lysates (35ug/lane). This demonstrates the DANRE pax2a antibody detected the DANRE pax2a protein (arrow).

Please note: All products are 'FOR RESEARCH USE ONLY. NOT FOR USE IN DIAGNOSTIC OR THERAPEUTIC PROCEDURES'.