

# DANRE hoxc4a Antibody (C-term)

Affinity Purified Rabbit Polyclonal Antibody (Pab)

Catalog # Azb10015a

## Product Information

---

Application	WB, E
Primary Accession	<a href="#">Q9PWM3</a>
Reactivity	Zebrafish
Host	Rabbit
Clonality	Polyclonal
Isotype	Rabbit IgG
Calculated MW	30111
Antigen Region	240-267

## Additional Information

---

Gene ID	30345
Other Names	Homeobox protein Hox-C4a, Hox-C4, hoxc4a, hoxc4
Target/Specificity	This DANRE hoxc4a antibody is generated from rabbits immunized with a KLH conjugated synthetic peptide between 240-267 amino acids from the C-terminal region of DANRE hoxc4a.
Dilution	WB~~1:1000 E~~Use at an assay dependent concentration.
Format	Purified polyclonal antibody supplied in PBS with 0.09% (W/V) sodium azide. This antibody is purified through a protein A column, followed by peptide affinity purification.
Storage	Maintain refrigerated at 2-8°C for up to 2 weeks. For long term storage store at -20°C in small aliquots to prevent freeze-thaw cycles.
Precautions	DANRE hoxc4a Antibody (C-term) is for research use only and not for use in diagnostic or therapeutic procedures.

## Protein Information

---

Name	hoxc4a
Synonyms	hoxc4
Function	Sequence-specific transcription factor which is part of a developmental regulatory system that provides cells with specific positional identities on the anterior-posterior axis.

## Background

---

Sequence-specific transcription factor which is part of a developmental regulatory system that provides cells with specific positional identities on the anterior-posterior axis (By similarity).

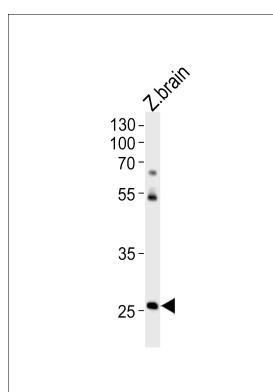
## References

---

Amores A., et al. Science 282:1711-1714(1998).  
Corredor-Adamez M., et al. Evol. Dev. 7:362-375(2005).  
Prince V.E., et al. Development 125:407-420(1998).

## Images

---



DANRE hoxc4a Antibody (C-term) (Cat. #Azb10015a) western blot analysis in zebra fish brain tissue lysates (35ug/lane). This demonstrates the DANRE hoxc4a antibody detected the DANRE hoxc4a protein (arrow).

Please note: All products are 'FOR RESEARCH USE ONLY. NOT FOR USE IN DIAGNOSTIC OR THERAPEUTIC PROCEDURES'.