

# DANRE dlx6a Antibody (C-term)

Affinity Purified Rabbit Polyclonal Antibody (Pab)

Catalog # Azb10010a

## Product Information

---

Application	WB, E
Primary Accession	<a href="#">Q98877</a>
Reactivity	Zebrafish
Host	Rabbit
Clonality	Polyclonal
Isotype	Rabbit IgG
Calculated MW	27624
Antigen Region	167-194

## Additional Information

---

Gene ID	30586
Other Names	Homeobox protein Dlx6a, Distal-less homeobox protein 6a, DLX-6, dlx6a, dlx6
Target/Specificity	This DANRE dlx6a antibody is generated from rabbits immunized with a KLH conjugated synthetic peptide between 167-194 amino acids from the C-terminal region of DANRE dlx6a.
Dilution	WB~~1:1000 E~~Use at an assay dependent concentration.
Format	Purified polyclonal antibody supplied in PBS with 0.09% (W/V) sodium azide. This antibody is purified through a protein A column, followed by peptide affinity purification.
Storage	Maintain refrigerated at 2-8°C for up to 2 weeks. For long term storage store at -20°C in small aliquots to prevent freeze-thaw cycles.
Precautions	DANRE dlx6a Antibody (C-term) is for research use only and not for use in diagnostic or therapeutic procedures.

## Protein Information

---

Name	dlx6a
Synonyms	dlx6
Cellular Location	Nucleus {ECO:0000255 PROSITE-ProRule:PRU00108}.

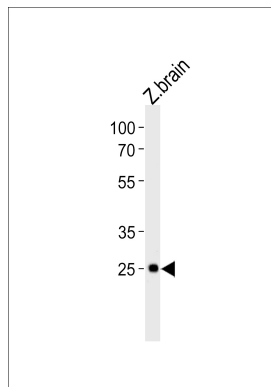
## References

---

Stock D.W., et al. Proc. Natl. Acad. Sci. U.S.A. 93:10858-10863(1996).

## Images

---



DANRE dlx6a Antibody (C-term) (Cat. #Azb10010a)  
western blot analysis in zebra fish brain tissue lysates  
(35ug/lane). This demonstrates the DANRE dlx6a antibody  
detected the DANRE dlx6a protein (arrow).

Please note: All products are 'FOR RESEARCH USE ONLY. NOT FOR USE IN DIAGNOSTIC OR THERAPEUTIC PROCEDURES'.