

PPM1H Antibody (Center)

Affinity Purified Rabbit Polyclonal Antibody (Pab)
Catalog # AW5604

Product Information

Application	FC, IHC-P, WB
Primary Accession	Q9ULR3
Reactivity	Human, Mouse
Host	Rabbit
Clonality	Polyclonal
Calculated MW	56448
Isotype	Rabbit IgG
Antigen Source	HUMAN

Additional Information

Gene ID	57460
Antigen Region	235-263
Other Names	Protein phosphatase 1H, PPM1H, ARHCL1, KIAA1157, URCC2
Dilution	FC~~1:10~50 IHC-P~~1:100~500 WB~~1:2000
Target/Specificity	This PPM1H antibody is generated from rabbits immunized with a KLH conjugated synthetic peptide between 235-263 amino acids from the Central region of human PPM1H.
Format	Purified polyclonal antibody supplied in PBS with 0.09% (W/V) sodium azide. This antibody is purified through a protein A column, followed by peptide affinity purification.
Storage	Maintain refrigerated at 2-8°C for up to 2 weeks. For long term storage store at -20°C in small aliquots to prevent freeze-thaw cycles.
Precautions	PPM1H Antibody (Center) is for research use only and not for use in diagnostic or therapeutic procedures.

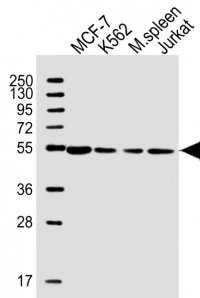
Protein Information

Name	PPM1H
Synonyms	ARHCL1, KIAA1157, URCC2
Function	Dephosphorylates CDKN1B at 'Thr-187', thus removing a signal for proteasomal degradation.

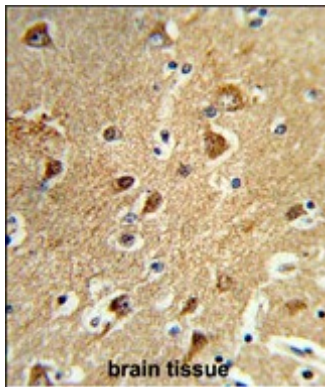
References

Sugiura,T., et.al., *Cancer Biol. Ther.* 7 (2), 285-292 (2008)
 Labes,M., et.al., *Mol. Cell. Neurosci.* 12 (1-2), 29-47 (1998)

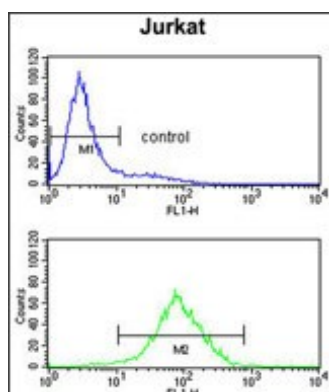
Images



All lanes : Anti-PPM1H Antibody (Center) at 1:2000 dilution
 Lane 1: MCF-7 whole cell lysate
 Lane 2: K562 whole cell lysate
 Lane 3: mouse spleen lysate
 Lane 4: Jurkat whole cell lysate
 Lysates/proteins at 20 µg per lane.
 Secondary Goat Anti-Rabbit IgG, (H+L), Peroxidase conjugated at 1/10000 dilution. Predicted band size : 56 kDa
 Blocking/Dilution buffer: 5% NFDM/TBST.



Formalin-fixed and paraffin-embedded human brain tissue reacted with PPM1H Antibody (Center), which was peroxidase-conjugated to the secondary antibody, followed by DAB staining. This data demonstrates the use of this antibody for immunohistochemistry; clinical relevance has not been evaluated.



PPM1H Antibody (Center)(Cat. #AW5604) flow cytometry analysis of Jurkat cells (bottom histogram) compared to a negative control cell (top histogram). FITC-conjugated goat-anti-rabbit secondary antibodies were used for the analysis.

Please note: All products are 'FOR RESEARCH USE ONLY. NOT FOR USE IN DIAGNOSTIC OR THERAPEUTIC PROCEDURES'.