

# HFE2 Antibody (Center)

Affinity Purified Rabbit Polyclonal Antibody (Pab)

Catalog # AW5578

## Product Information

---

<b>Application</b>	IHC-P, WB
<b>Primary Accession</b>	<a href="#">Q6ZVN8</a>
<b>Reactivity</b>	Human
<b>Host</b>	Rabbit
<b>Clonality</b>	Polyclonal
<b>Calculated MW</b>	45080
<b>Isotype</b>	Rabbit IgG
<b>Antigen Source</b>	HUMAN

## Additional Information

---

<b>Gene ID</b>	148738
<b>Antigen Region</b>	134-162
<b>Other Names</b>	Hemojuvelin, Hemochromatosis type 2 protein, RGM domain family member C, HFE2, HJV, RGMC
<b>Dilution</b>	IHC-P~~1:100~500 WB~~1:1000
<b>Target/Specificity</b>	This HFE2 antibody is generated from rabbits immunized with a KLH conjugated synthetic peptide between 134-162 amino acids from the Central region of human HFE2.
<b>Format</b>	Purified polyclonal antibody supplied in PBS with 0.09% (W/V) sodium azide. This antibody is purified through a protein A column, followed by peptide affinity purification.
<b>Storage</b>	Maintain refrigerated at 2-8°C for up to 2 weeks. For long term storage store at -20°C in small aliquots to prevent freeze-thaw cycles.
<b>Precautions</b>	HFE2 Antibody (Center) is for research use only and not for use in diagnostic or therapeutic procedures.

## Protein Information

---

<b>Name</b>	HJV ( <a href="#">HGNC:4887</a> )
<b>Synonyms</b>	HFE2, RGMC
<b>Function</b>	Acts as a bone morphogenetic protein (BMP) coreceptor

(PubMed:[18976966](#)). Through enhancement of BMP signaling regulates hepcidin (HAMP) expression and regulates iron homeostasis (PubMed:[18976966](#)).

#### Cellular Location

Cell membrane; Lipid-anchor, GPI- anchor. Note=Also released in the extracellular space

#### Tissue Location

Adult and fetal liver, heart, and skeletal muscle.

## Background

---

HFE2 is involved in iron metabolism. It may be a component of the signaling pathway which activates hepcidin or it may act as a modulator of hepcidin expression. It could also represent the cellular receptor for hepcidin.

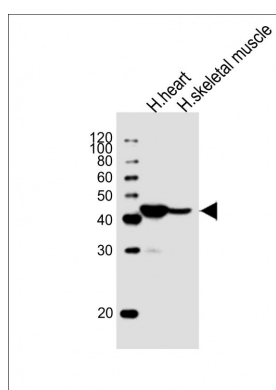
## References

---

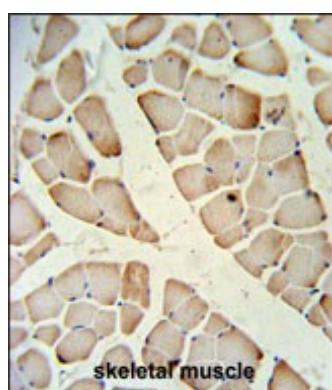
Zhu, X., et al. Genet. Epidemiol. 34(2):171-187(2010)  
Barton, J.C., et al. Am. J. Hematol. 84(11):710-714(2009)  
Zhang, A.S., et al. J. Biol. Chem. 284(34):22580-22589(2009)

## Images

---



All lanes : Anti-HFE2 Antibody (Center) at 1:1000 dilution  
Lane 1: human heart lysate Lane 2: human skeletal muscle lysates/proteins at 20 µg per lane.  
Secondary Goat Anti-Rabbit IgG, (H+L), Peroxidase conjugated at 1/10000 dilution. Predicted band size : 45 kDa Blocking/Dilution buffer: 5% NFDm/TBST.



HFE2 Antibody (Center) (Cat. #AW5578) IHC analysis in formalin fixed and paraffin embedded skeletal muscle followed by peroxidase conjugation of the secondary antibody and DAB staining. This data demonstrates the use of the HFE2 Antibody (Center) for immunohistochemistry. Clinical relevance has not been evaluated.

Please note: All products are 'FOR RESEARCH USE ONLY. NOT FOR USE IN DIAGNOSTIC OR THERAPEUTIC PROCEDURES'.