

PDHA1 Antibody

Affinity Purified Rabbit Polyclonal Antibody (Pab)
Catalog # AW5558

Product Information

Application	WB
Primary Accession	P08559
Reactivity	Human, Mouse, Rat
Host	Rabbit
Clonality	Polyclonal
Calculated MW	43296
Isotype	Rabbit IgG
Antigen Source	HUMAN

Additional Information

Gene ID	5160
Antigen Region	1-390
Other Names	Pyruvate dehydrogenase E1 component subunit alpha, somatic form, mitochondrial, PDHE1-A type I, PDHA1, PHE1A
Dilution	WB~~1:1000
Target/Specificity	This PDHA1 Antibody is generated from rabbits immunized with recombinant protein of human PDHA1.
Format	Purified polyclonal antibody supplied in PBS with 0.09% (W/V) sodium azide. This antibody is purified through a protein A column, followed by peptide affinity purification.
Storage	Maintain refrigerated at 2-8°C for up to 2 weeks. For long term storage store at -20°C in small aliquots to prevent freeze-thaw cycles.
Precautions	PDHA1 Antibody is for research use only and not for use in diagnostic or therapeutic procedures.

Protein Information

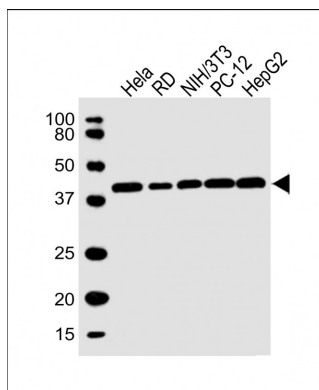
Name	PDHA1 (HGNC:8806)
Synonyms	PHE1A
Function	Together with PDHB forms the heterotetrameric E1 subunit of the pyruvate dehydrogenase (PDH) complex (PubMed: 17474719 , PubMed: 19081061). The

PDH complex catalyzes the overall conversion of pyruvate to acetyl-CoA and CO₂, and thereby links cytoplasmic glycolysis and the mitochondrial tricarboxylic acid (TCA) cycle (PubMed:[19081061](#), PubMed:[7782287](#)). It contains multiple copies of three enzymatic components: pyruvate dehydrogenase (E1), dihydrolipoamide acetyltransferase (E2) and dihydrolipoamide dehydrogenase (E3) (Probable). The E1 subunit catalyzes both the thiamine pyrophosphate (TPP)-dependent decarboxylation of pyruvate and the reductive acetylation of a lipoyl group covalently linked to the lipoyl-bearing domains of E2 (PubMed:[17474719](#), PubMed:[19081061](#), PubMed:[7782287](#)).

Cellular Location Mitochondrion matrix {ECO:0000250 | UniProtKB:P26284}

Tissue Location Ubiquitous.

Images



All lanes : Anti-PDHA1 Antibody at 1:1000 dilution Lane 1: HeLa whole cell lysate Lane 2: RD whole cell lysate Lane 3: NIH/3T3 whole cell lysate Lane 4: PC-12 whole cell lysate Lane 5: HepG2 whole cell lysate Lysates/proteins at 20 µg per lane. Secondary Goat Anti-Rabbit IgG, (H+L), Peroxidase conjugated at 1/10000 dilution. Predicted band size : 43 kDa Blocking/Dilution buffer: 5% NFDm/TBST.

Please note: All products are 'FOR RESEARCH USE ONLY. NOT FOR USE IN DIAGNOSTIC OR THERAPEUTIC PROCEDURES'.