

# MBL2 Antibody (C-term)

Affinity Purified Rabbit Polyclonal Antibody (Pab)

Catalog # AW5525

## Product Information

---

<b>Application</b>	IHC-P, IF, WB
<b>Primary Accession</b>	<a href="#">P11226</a>
<b>Reactivity</b>	Human
<b>Host</b>	Rabbit
<b>Clonality</b>	Polyclonal
<b>Calculated MW</b>	26144
<b>Isotype</b>	Rabbit IgG
<b>Antigen Source</b>	HUMAN

## Additional Information

---

<b>Gene ID</b>	4153
<b>Antigen Region</b>	188-222
<b>Other Names</b>	Mannose-binding protein C, MBP-C, Collectin-1, MBP1, Mannan-binding protein, Mannose-binding lectin, MBL2, COLEC1, MBL
<b>Dilution</b>	IHC-P~~1:100~500 IF~~1:10~50 WB~~1:1000
<b>Target/Specificity</b>	This MBL2 antibody is generated from rabbits immunized with a KLH conjugated synthetic peptide between 188-222 amino acids from the C-terminal region of human MBL2.
<b>Format</b>	Purified polyclonal antibody supplied in PBS with 0.09% (W/V) sodium azide. This antibody is purified through a protein A column, followed by peptide affinity purification.
<b>Storage</b>	Maintain refrigerated at 2-8°C for up to 2 weeks. For long term storage store at -20°C in small aliquots to prevent freeze-thaw cycles.
<b>Precautions</b>	MBL2 Antibody (C-term) is for research use only and not for use in diagnostic or therapeutic procedures.

## Protein Information

---

<b>Name</b>	MBL2 ( <a href="#">HGNC:6922</a> )
<b>Synonyms</b>	COLEC1, MBL
<b>Function</b>	Calcium-dependent lectin involved in innate immune defense

(PubMed:[35102342](#)). Binds mannose, fucose and N-acetylglucosamine on different microorganisms and activates the lectin complement pathway. Binds to late apoptotic cells, as well as to apoptotic blebs and to necrotic cells, but not to early apoptotic cells, facilitating their uptake by macrophages. May bind DNA. Upon SARS coronavirus-2/SARS-CoV-2 infection, activates the complement lectin pathway which leads to the inhibition SARS-CoV-2 infection and a reduction of the induced inflammatory response (PubMed:[35102342](#)).

**Cellular Location** Secreted.

**Tissue Location** Plasma protein produced mainly in the liver.

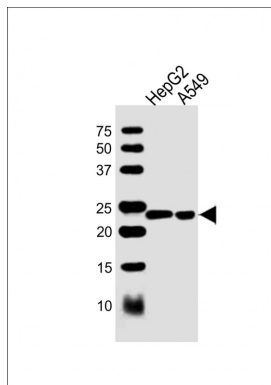
## Background

This gene encodes the soluble mannose-binding lectin or mannose-binding protein found in serum. The protein encoded belongs to the collectin family and is an important element in the innate immune system. The protein recognizes mannose and N-acetylglucosamine on many microorganisms, and is capable of activating the classical complement pathway. Deficiencies of this gene have been associated with susceptibility to autoimmune and infectious diseases.

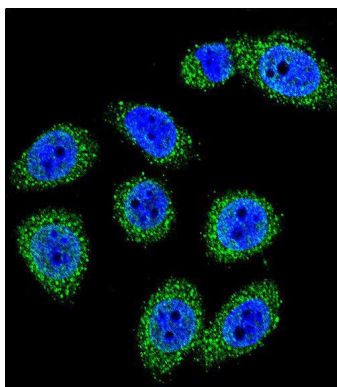
## References

Auriti, C., et al. Hum. Immunol. 71(11):1084-1088(2010)  
Fraser, D.A., et al. J. Immunol. 185(7):3932-3939(2010)  
de Wit, E., et al. Mamm. Genome (2010) In press :  
Filho, R.M., et al. Viral Immunol. 23(4):449-453(2010)  
Hu, Y., et al. Viral Immunol. 23(4):443-447(2010)

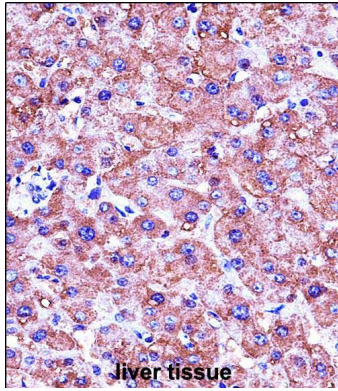
## Images



All lanes : Anti-MBL2 Antibody (C-term) at 1:1000 dilution  
Lane 1: HepG2 whole cell lysate Lane 2: A549 whole cell lysate  
Lysates/proteins at 20 µg per lane. Secondary Goat Anti-Rabbit IgG, (H+L), Peroxidase conjugated at 1/10000 dilution. Predicted band size : 26 kDa  
Blocking/Dilution buffer: 5% NFDM/TBST.



Confocal immunofluorescent analysis of MBL2 Antibody (C-term)(Cat#AW5525) with A549 cell followed by Alexa Fluor 488-conjugated goat anti-rabbit IgG (green). DAPI was used to stain the cell nuclear (blue).



MBL2 Antibody (C-term) (Cat. #AW5525) immunohistochemistry analysis in formalin fixed and paraffin embedded human liver tissue followed by peroxidase conjugation of the secondary antibody and DAB staining. This data demonstrates the use of MBL2 Antibody (C-term) for immunohistochemistry. Clinical relevance has not been evaluated.

Please note: All products are 'FOR RESEARCH USE ONLY. NOT FOR USE IN DIAGNOSTIC OR THERAPEUTIC PROCEDURES'.