

# RPS15 Antibody (N-term)

Affinity Purified Rabbit Polyclonal Antibody (Pab)

Catalog # AW5522

## Product Information

---

|                          |                        |
|--------------------------|------------------------|
| <b>Application</b>       | FC, IHC-P, WB          |
| <b>Primary Accession</b> | <a href="#">P62841</a> |
| <b>Reactivity</b>        | Human                  |
| <b>Host</b>              | Rabbit                 |
| <b>Clonality</b>         | Polyclonal             |
| <b>Calculated MW</b>     | 17040                  |
| <b>Isotype</b>           | Rabbit IgG             |
| <b>Antigen Source</b>    | HUMAN                  |

## Additional Information

---

|                           |  |
|---------------------------|--|
| <b>Gene ID</b>            | 6209   |
| <b>Antigen Region</b>     | 4-38   |
| <b>Other Names</b>        | 40S ribosomal protein S15, RIG protein, RPS15, RIG   |
| <b>Dilution</b>           | FC~~1:10~50 IHC-P~~1:100~500 WB~~1:1000  |
| <b>Target/Specificity</b> | This RPS15 antibody is generated from rabbits immunized with a KLH conjugated synthetic peptide between 1-38 amino acids from the N-terminal region of human RPS15.          |
| <b>Format</b>             | Purified polyclonal antibody supplied in PBS with 0.09% (W/V) sodium azide. This antibody is purified through a protein A column, followed by peptide affinity purification. |
| <b>Storage</b>            | Maintain refrigerated at 2-8°C for up to 2 weeks. For long term storage store at -20°C in small aliquots to prevent freeze-thaw cycles.                                      |
| <b>Precautions</b>        | RPS15 Antibody (N-term) is for research use only and not for use in diagnostic or therapeutic procedures.  |

## Protein Information

---

|                 |   |
|-----------------|---|
| <b>Name</b>     | RPS15   |
| <b>Synonyms</b> | RIG   |
| <b>Function</b> | Component of the small ribosomal subunit (PubMed: <a href="#">23636399</a> ). The ribosome is a large ribonucleoprotein complex responsible for the synthesis |

of proteins in the cell (PubMed:[23636399](#)).

## Cellular Location

Cytoplasm.

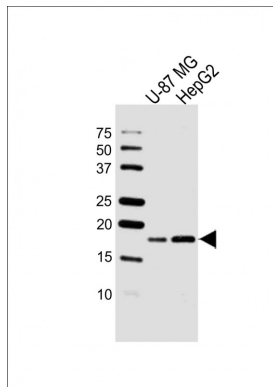
## Background

Ribosomes, the organelles that catalyze protein synthesis, consist of a small 40S subunit and a large 60S subunit. Together these subunits are composed of 4 RNA species and approximately 80 structurally distinct proteins. RPS15 is a component of the 40S subunit. The protein belongs to the S19P family of ribosomal proteins. It is located in the cytoplasm.

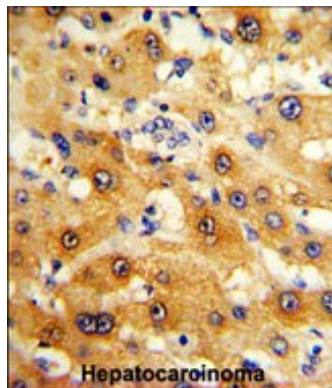
## References

Yu,Y., et.al., Protein Sci. 14 (6), 1438-1446 (2005)

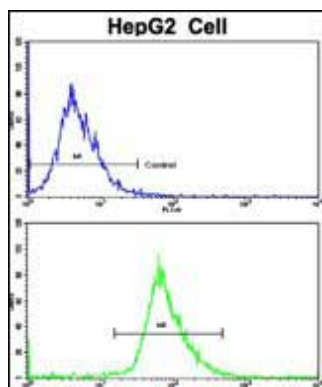
## Images



All lanes : Anti-RPS15 Antibody (N-term) at 1:1000 dilution  
Lane 1: U-87 MG whole cell lysate Lane 2: HepG2 whole cell lysate  
Lysates/proteins at 20 µg per lane. Secondary Goat Anti-Rabbit IgG, (H+L), Peroxidase conjugated at 1/10000 dilution. Predicted band size : 17 kDa  
Blocking/Dilution buffer: 5% NFDM/TBST.



Formalin-fixed and paraffin-embedded human hepatocarcinoma reacted with RPS15 Antibody (N-term), which was peroxidase-conjugated to the secondary antibody, followed by DAB staining. This data demonstrates the use of this antibody for immunohistochemistry; clinical relevance has not been evaluated.



Flow cytometric analysis of HepG2 cells using RPS15 Antibody (N-term)(bottom histogram) compared to a negative control cell (top histogram). FITC-conjugated goat-anti-rabbit secondary antibodies were used for the analysis.

Please note: All products are 'FOR RESEARCH USE ONLY. NOT FOR USE IN DIAGNOSTIC OR THERAPEUTIC PROCEDURES'.