

# GPR56 Antibody [Knockdown Validated]

Purified Mouse Monoclonal Antibody (Mab)

Catalog # AW5511

## Product Information

---

<b>Application</b>	WB
<b>Primary Accession</b>	<a href="#">Q9Y653</a>
<b>Reactivity</b>	Human
<b>Host</b>	Mouse
<b>Clonality</b>	Monoclonal
<b>Calculated MW</b>	78 KDa
<b>Isotype</b>	IgG1,k
<b>Antigen Source</b>	HUMAN

## Additional Information

---

<b>Antigen Region</b>	Recombinant protein
<b>Other Names</b>	G-protein coupled receptor 56, Protein TM7XN1, GPR56 N-terminal fragment, GPR56 NT, GPR56(N), GPR56 extracellular subunit, GPR56 subunit alpha, GPR56 C-terminal fragment, GPR56 CT, GPR56(C), GPR56 seven-transmembrane subunit, GPR56 7TM, GPR56 subunit beta, GPR56, TM7LN4, TM7XN1
<b>Dilution</b>	WB~~1:2000
<b>Target/Specificity</b>	This antibody is generated from a mouse immunized with a recombinant protein.
<b>Storage</b>	Maintain refrigerated at 2-8°C for up to 2 weeks. For long term storage store at -20°C in small aliquots to prevent freeze-thaw cycles.
<b>Precautions</b>	GPR56 Antibody [Knockdown Validated] is for research use only and not for use in diagnostic or therapeutic procedures.

## Protein Information

---

### Background

---

Involved in cell adhesion and probably in cell-cell interactions. Regulates the migration of neural precursor cells. Receptor for collagen III/COL3A1 in the developing brain and involved in regulation of cortical development, specifically in maintenance of the pial basement membrane integrity and in cortical lamination. Binding to the COL3A1 ligand inhibits neuronal migration and activates the RhoA pathway by coupling to GNA13 and possibly GNA12. Isoforms show differences in receptor signaling, specifically in serum response element (SRE) transcriptional activation upon overexpression. Overexpression inhibits

melanoma tumor growth and metastasis and, during melanoma progression, regulates VEGFA production and angiogenesis through PRKCA; unprocessed GPR56 is inhibiting and GPR56 NT is activating angiogenesis.

## References

---

Liu M., et al. *Genomics* 55:296-305(1999).

Zendman A.J.W., et al. *FEBS Lett.* 446:292-298(1999).

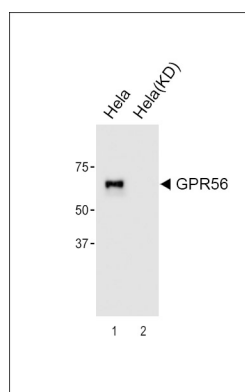
Kaighin V.A., et al. Submitted (DEC-2007) to the EMBL/GenBank/DDBJ databases.

Clark H.F., et al. *Genome Res.* 13:2265-2270(2003).

Ota T., et al. *Nat. Genet.* 36:40-45(2004).

## Images

---



All lanes : Anti-GPR56 Antibody at 1:2000 dilution Lane 1: HeLa Lane 2: HeLa-Knockdown Lysates/proteins at 20  $\mu$ g per lane. Secondary Goat Anti-Mouse IgG, (H+L), Peroxidase conjugated (ASP1613) at 1/8000 dilution.

Please note: All products are 'FOR RESEARCH USE ONLY. NOT FOR USE IN DIAGNOSTIC OR THERAPEUTIC PROCEDURES'.