

DANRE mycl1a Antibody (N-term)

Purified Rabbit Polyclonal Antibody (Pab)

Catalog # AW5508

Product Information

Application	WB
Primary Accession	Q9PSI9
Reactivity	Zebrafish
Host	Rabbit
Clonality	Polyclonal
Calculated MW	41380
Isotype	Rabbit IgG
Antigen Source	HUMAN

Additional Information

Gene ID	405873
Antigen Region	80-113
Other Names	Protein L-Myc-1a, Protein L-Myc 1, zL-Myc, mycl1a {ECO:0000312 EMBL:AAH677231}, lmyc1, mycl1
Dilution	WB~~1:1000
Target/Specificity	This DANRE mycl1a antibody is generated from a rabbit immunized with a KLH conjugated synthetic peptide between 80-113 amino acids from the N-terminal region of DANRE mycl1a.
Format	Purified polyclonal antibody supplied in PBS with 0.09% (W/V) sodium azide. This antibody is purified through a protein A column, followed by peptide affinity purification.
Storage	Maintain refrigerated at 2-8°C for up to 2 weeks. For long term storage store at -20°C in small aliquots to prevent freeze-thaw cycles.
Precautions	DANRE mycl1a Antibody (N-term) is for research use only and not for use in diagnostic or therapeutic procedures.

Protein Information

Name	mycl1a {ECO:0000312 EMBL:AAH67723.1}
Synonyms	lmyc1, mycl1
Cellular Location	Nucleus {ECO:0000250 UniProtKB:P12524,

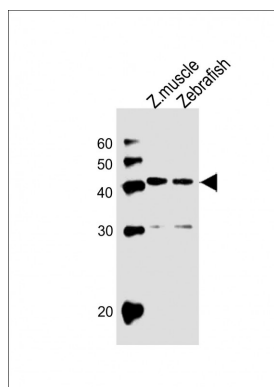
Tissue Location

Uterus..

References

Schreiber-Agus N., et al. Mol. Cell. Biol. 13:2765-2775(1993).

Images



All lanes : Anti-DANRE mycl1a Antibody (N-term) at 1:1000 dilution Lane 1: Zebrafish muscle lysates Lane 2: Zebrafish lysates Lysates/proteins at 20 µg per lane. Secondary Goat Anti-Rabbit IgG, (H+L), Peroxidase conjugated at 1/10000 dilution. Predicted band size : 41 kDa Blocking/Dilution buffer: 5% NFDM/TBST.

Please note: All products are 'FOR RESEARCH USE ONLY. NOT FOR USE IN DIAGNOSTIC OR THERAPEUTIC PROCEDURES'.