

# (DANRE) ba2 Antibody (Center)

Purified Rabbit Polyclonal Antibody (Pab)

Catalog # AW5479

## Product Information

---

<b>Application</b>	WB
<b>Primary Accession</b>	<a href="#">Q90485</a>
<b>Reactivity</b>	Zebrafish
<b>Host</b>	Rabbit
<b>Clonality</b>	Polyclonal
<b>Calculated MW</b>	16 KDa
<b>Isotype</b>	Rabbit IgG
<b>Antigen Source</b>	HUMAN

## Additional Information

---

<b>Antigen Region</b>	71-104
<b>Other Names</b>	Hemoglobin subunit beta-2, Beta-2-globin, Beta-A2-globin, Hemoglobin beta-2 chain, ba2
<b>Dilution</b>	WB~~1:1000
<b>Target/Specificity</b>	This (DANRE) ba2 antibody is generated from a rabbit immunized with a KLH conjugated synthetic peptide between 71-104 amino acids from the Central region of human (DANRE) ba2.
<b>Format</b>	Purified polyclonal antibody supplied in PBS with 0.09% (W/V) sodium azide. This antibody is purified through a protein A column, followed by peptide affinity purification.
<b>Storage</b>	Maintain refrigerated at 2-8°C for up to 2 weeks. For long term storage store at -20°C in small aliquots to prevent freeze-thaw cycles.
<b>Precautions</b>	(DANRE) ba2 Antibody (Center) is for research use only and not for use in diagnostic or therapeutic procedures.

## Protein Information

---

### Background

---

Involved in oxygen transport from gills to the various peripheral tissues.

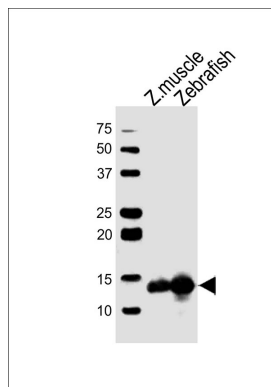
### References

---

Chan F.-Y., et al. Blood 89:688-700(1997).  
Howe K., et al. Nature 496:498-503(2013).

## Images

---



All lanes : Anti-ba2 Antibody (Center) at 1:1000 dilution  
Lane 1: zebrafish muscle lysates Lane 2: zebrafish lysates  
Lysates/proteins at 20  $\mu$ g per lane. Secondary Goat  
Anti-Rabbit IgG, (H+L), Peroxidase conjugated at 1/10000  
dilution Predicted band size : 16 kDa Blocking/Dilution  
buffer: 5% NFDN/TBST.

Please note: All products are 'FOR RESEARCH USE ONLY. NOT FOR USE IN DIAGNOSTIC OR THERAPEUTIC PROCEDURES'.