

TPI1 Antibody (C-term)

Purified Rabbit Polyclonal Antibody (Pab)

Catalog # AW5440

Product Information

Application	FC, IHC-P, WB
Primary Accession	P60174
Other Accession	P48500 , P00939 , P17751 , Q60HC9 , Q5E956
Reactivity	Mouse, Rat, Human
Predicted	Mouse, Rat
Host	Rabbit
Clonality	Polyclonal
Calculated MW	26669
Isotype	Rabbit IgG
Antigen Source	HUMAN

Additional Information

Gene ID	7167
Antigen Region	258-286
Other Names	Triosephosphate isomerase, TIM, Triose-phosphate isomerase, TPI1, TPI
Dilution	FC~~1:10~50 IHC-P~~1:100~500 WB~~1:1000
Target/Specificity	This TPI1 antibody is generated from rabbits immunized with a KLH conjugated synthetic peptide between 258-286 amino acids from the C-terminal region of human TPI1.
Format	Purified polyclonal antibody supplied in PBS with 0.09% (W/V) sodium azide. This antibody is prepared by Saturated Ammonium Sulfate (SAS) precipitation followed by dialysis against PBS.
Storage	Maintain refrigerated at 2-8°C for up to 2 weeks. For long term storage store at -20°C in small aliquots to prevent freeze-thaw cycles.
Precautions	TPI1 Antibody (C-term) is for research use only and not for use in diagnostic or therapeutic procedures.

Protein Information

Name	TPI1 (HGNC:12009)
Synonyms	TPI

Function	Triosephosphate isomerase is an extremely efficient metabolic enzyme that catalyzes the interconversion between dihydroxyacetone phosphate (DHAP) and D-glyceraldehyde-3-phosphate (G3P) in glycolysis and gluconeogenesis.
Cellular Location	Cytoplasm {ECO:0000255 PROSITE-ProRule:PRU10127}.

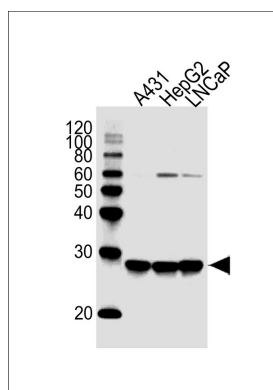
Background

TPI1 is an enzyme, consisting of two identical proteins, which catalyzes the isomerization of glyceraldehydes 3-phosphate (G3P) and dihydroxy-acetone phosphate (DHAP) in glycolysis and gluconeogenesis.

References

Martins-de-Souza,D., et.al., BMC Psychiatry 9, 17 (2009)

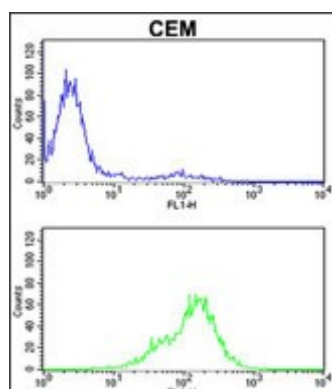
Images



All lanes : Anti-TPI1 Antibody (C-term) at 1:1000 dilution
Lane 1: A431 whole cell lysates Lane 2: HepG2 whole cell lysates Lane 3: LNCaP whole cell lysates Lysates/proteins at 20 µg per lane. Secondary Goat Anti-Rabbit IgG, (H+L), Peroxidase conjugated at 1/10000 dilution
Predicted band size : 31 kDa Blocking/Dilution buffer: 5% NFDM/TBST.



Formalin-fixed and paraffin-embedded human prostate carcinoma reacted with TPI1 Antibody (C-term), which was peroxidase-conjugated to the secondary antibody, followed by DAB staining. This data demonstrates the use of this antibody for immunohistochemistry; clinical relevance has not been evaluated.



TPI1 Antibody (C-term) (Cat. #AW5440) flow cytometric analysis of CEM cells (bottom histogram) compared to a negative control cell (top histogram). FITC-conjugated goat-anti-rabbit secondary antibodies were used for the analysis.

Please note: All products are 'FOR RESEARCH USE ONLY. NOT FOR USE IN DIAGNOSTIC OR THERAPEUTIC PROCEDURES'.