

# MTTP Antibody (C-term)

Purified Rabbit Polyclonal Antibody (Pab)

Catalog # AW5427

## Product Information

---

<b>Application</b>	FC, WB
<b>Primary Accession</b>	<a href="#">P55157</a>
<b>Reactivity</b>	Human
<b>Host</b>	Rabbit
<b>Clonality</b>	Polyclonal
<b>Calculated MW</b>	99351
<b>Isotype</b>	Rabbit IgG
<b>Antigen Source</b>	HUMAN

## Additional Information

---

<b>Gene ID</b>	4547
<b>Antigen Region</b>	878-911
<b>Other Names</b>	Microsomal triglyceride transfer protein large subunit, MTTP, MTP
<b>Dilution</b>	FC~~1:25 WB~~1:1000
<b>Target/Specificity</b>	This MTTP antibody is generated from a rabbit immunized with a KLH conjugated synthetic peptide between 878-911 amino acids from the C-terminal region of human MTTP.
<b>Format</b>	Purified polyclonal antibody supplied in PBS with 0.09% (W/V) sodium azide. This antibody is purified through a protein A column, followed by peptide affinity purification.
<b>Storage</b>	Maintain refrigerated at 2-8°C for up to 2 weeks. For long term storage store at -20°C in small aliquots to prevent freeze-thaw cycles.
<b>Precautions</b>	MTTP Antibody (C-term) is for research use only and not for use in diagnostic or therapeutic procedures.

## Protein Information

---

<b>Name</b>	MTTP
<b>Synonyms</b>	MTP
<b>Function</b>	Catalyzes the transport of triglyceride, cholesteryl ester, and phospholipid between phospholipid surfaces (PubMed: <a href="#">15897609</a> , PubMed: <a href="#">16478722</a> ,

PubMed:[22236406](#), PubMed:[23475612](#), PubMed:[25108285](#), PubMed:[26224785](#), PubMed:[8876250](#), PubMed:[8939939](#)). Required for the assembly and secretion of plasma lipoproteins that contain apolipoprotein B (PubMed:[16478722](#), PubMed:[23475612](#), PubMed:[26224785](#), PubMed:[8876250](#), PubMed:[8939939](#)). May be involved in regulating cholesteryl ester biosynthesis in cells that produce lipoproteins (By similarity).

#### Cellular Location

Endoplasmic reticulum. Golgi apparatus. Note=Colocalizes with P4HB/PDI in the endoplasmic reticulum (PubMed:23475612, PubMed:26224785)

#### Tissue Location

Liver and small intestine. Also found in ovary, testis and kidney.

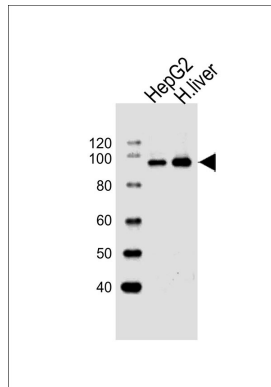
## Background

Catalyzes the transport of triglyceride, cholesteryl ester, and phospholipid between phospholipid surfaces. Required for the secretion of plasma lipoproteins that contain apolipoprotein B.

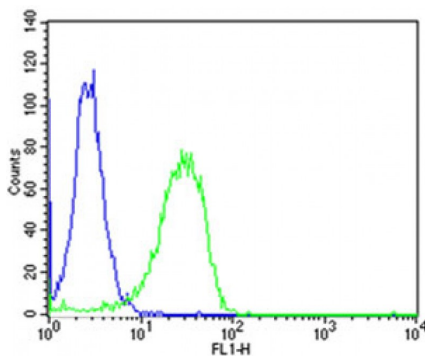
## References

- Shoulders C.C.,et al.Hum. Mol. Genet. 2:2109-2116(1993).  
Sharp D.,et al.Nature 365:65-69(1993).  
Sharp D.,et al.Biochemistry 33:9057-9061(1994).  
Ota T.,et al.Nat. Genet. 36:40-45(2004).  
Hagan D.L.,et al.J. Biol. Chem. 269:28737-28744(1994).

## Images



All lanes : Anti-MTTP Antibody (C-term) at 1:1000 dilution  
Lane 1: HepG2 whole cell lysates Lane 2: human liver lysates  
Lysates/proteins at 20 µg per lane. Secondary Goat Anti-Rabbit IgG, (H+L), Peroxidase conjugated at 1/10000 dilution Predicted band size : 99 kDa  
Blocking/Dilution buffer: 5% NFD/MTBST.



Flow cytometric analysis of HeLa cells using MTTP Antibody (C-term)(green, Cat#AW5427) compared to an isotype control of rabbit IgG(blue). AW5427 was diluted at 1:25 dilution. An Alexa Fluor® 488 goat anti-rabbit IgG at 1:400 dilution was used as the secondary antibody.

Please note: All products are 'FOR RESEARCH USE ONLY. NOT FOR USE IN DIAGNOSTIC OR THERAPEUTIC PROCEDURES'.