

INSRR Antibody (Center)

Purified Rabbit Polyclonal Antibody (Pab)

Catalog # AW5413

Product Information

Application	IHC-P, WB
Primary Accession	P14616
Reactivity	Human
Host	Rabbit
Clonality	Polyclonal
Calculated MW	143720
Isotype	Rabbit IgG
Antigen Source	HUMAN

Additional Information

Gene ID	3645
Antigen Region	668-702
Other Names	Insulin receptor-related protein, IRR, IR-related receptor, Insulin receptor-related protein alpha chain, Insulin receptor-related protein beta chain, INSRR, IRR
Dilution	IHC-P~~1:100~500 WB~~1:1000
Target/Specificity	This INSRR antibody is generated from a rabbit immunized with a KLH conjugated synthetic peptide between 668-702 amino acids from the Central region of human INSRR.
Format	Purified polyclonal antibody supplied in PBS with 0.09% (W/V) sodium azide. This antibody is purified through a protein A column, followed by peptide affinity purification.
Storage	Maintain refrigerated at 2-8°C for up to 2 weeks. For long term storage store at -20°C in small aliquots to prevent freeze-thaw cycles.
Precautions	INSRR Antibody (Center) is for research use only and not for use in diagnostic or therapeutic procedures.

Protein Information

Name	INSRR
Synonyms	IRR

Function	Receptor with tyrosine-protein kinase activity. Functions as a pH sensing receptor which is activated by increased extracellular pH. Activates an intracellular signaling pathway that involves IRS1 and AKT1/PKB.
Cellular Location	Membrane; Single-pass type I membrane protein.

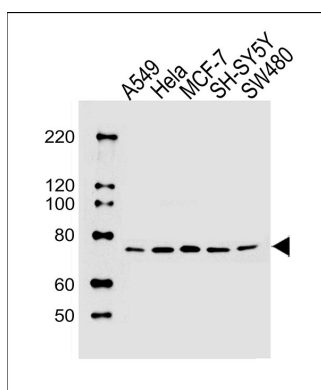
Background

Receptor with tyrosine-protein kinase activity. Functions as a pH sensing receptor which is activated by increased extracellular pH. Activates an intracellular signaling pathway that involves IRS1 and AKT1/PKB.

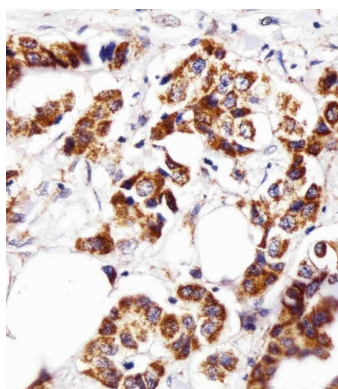
References

Haenze J.,et al.Horm. Metab. Res. 31:77-79(1999).
 Gregory S.G.,et al.Nature 441:315-321(2006).
 Mural R.J.,et al.Submitted (SEP-2005) to the EMBL/GenBank/DDBJ databases.
 Shier P.,et al.J. Biol. Chem. 264:14605-14608(1989).
 Greenman C.,et al.Nature 446:153-158(2007).

Images

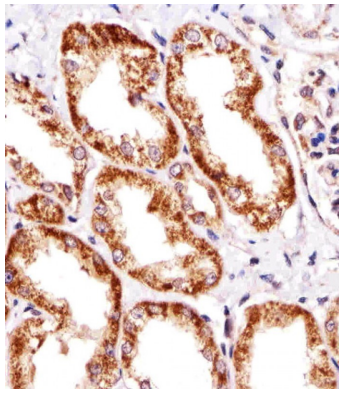


All lanes : Anti-INSRR Antibody (Center) at 1:1000 dilution
 Lane 1: A549 whole cell lysates Lane 2: HeLa whole cell lysates Lane 3: MCF-7 whole cell lysates Lane 4: SH-SY5Y whole cell lysates Lane 5: SW480 whole cell lysates
 Lysates/proteins at 20 µg per lane. Secondary Goat Anti-Rabbit IgG, (H+L), Peroxidase conjugated at 1/10000 dilution Predicted band size : 144 kDa Blocking/Dilution buffer: 5% NFDM/TBST.



Immunohistochemical analysis of paraffin-embedded H. breast carcinoma section using INSRR Antibody (Center)(Cat#AW5413). AW5413 was diluted at 1:25 dilution. A undiluted biotinylated goat polyvalent antibody was used as the secondary, followed by DAB staining.

Immunohistochemical analysis of paraffin-embedded H. kidney section using INSRR Antibody (Center)(Cat#AW5413). AW5413 was diluted at 1:25 dilution. A undiluted biotinylated goat polyvalent antibody was used as the secondary, followed by DAB staining.



Please note: All products are 'FOR RESEARCH USE ONLY. NOT FOR USE IN DIAGNOSTIC OR THERAPEUTIC PROCEDURES'.