

# STOM Antibody (N-term)

Purified Rabbit Polyclonal Antibody (Pab)

Catalog # AW5370

## Product Information

---

Application	WB
Primary Accession	<a href="#">P27105</a>
Reactivity	Human
Host	Rabbit
Clonality	Polyclonal
Calculated MW	31731
Isotype	Rabbit IgG
Antigen Source	HUMAN

## Additional Information

---

Gene ID	2040
Antigen Region	2-36
Other Names	Erythrocyte band 7 integral membrane protein, Protein 72b, Stomatin, STOM, BND7, EPB72
Dilution	WB~~1:1000
Target/Specificity	This STOM antibody is generated from a rabbit immunized with a KLH conjugated synthetic peptide between 2-36 amino acids from the N-terminal region of human STOM.
Format	Purified polyclonal antibody supplied in PBS with 0.09% (W/V) sodium azide. This antibody is purified through a protein A column, followed by peptide affinity purification.
Storage	Maintain refrigerated at 2-8°C for up to 2 weeks. For long term storage store at -20°C in small aliquots to prevent freeze-thaw cycles.
Precautions	STOM Antibody (N-term) is for research use only and not for use in diagnostic or therapeutic procedures.

## Protein Information

---

Name	STOM ( <a href="#">HGNC:3383</a> )
Function	Regulates ion channel activity and transmembrane ion transport. Regulates ASIC2 and ASIC3 channel activity.

<b>Cellular Location</b>	Cell membrane; Peripheral membrane protein; Cytoplasmic side. Cytoplasm, cytoskeleton. Cell membrane; Lipid-anchor; Cytoplasmic side. Membrane raft. Melanosome. Cytoplasmic vesicle {ECO:0000250 UniProtKB:P54116}. Note=Localizes to juxtanuclear structure probably derived from the Golgi apparatus (PubMed:9243190) Colocalizes with cortical actin microfilaments at small plasma membrane protrusions (PubMed:9243190). Associates with alpha-granular lipid rafts (PubMed:12130500). Translocates from the alpha-granular lipid rafts to the cell membrane on thrombin activation and selectively enriched in released microvesicles (PubMed:12130500). Identified by mass spectrometry in melanosome fractions from stage I to stage IV (PubMed:12643545).
<b>Tissue Location</b>	Detected in erythrocytes (at protein level). Widely expressed.

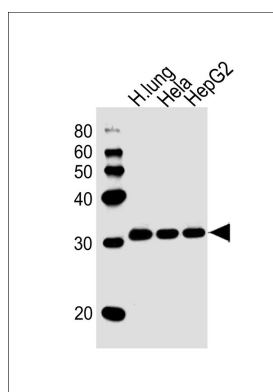
## Background

Thought to regulate cation conductance. May regulate ASIC2 and ASIC3 gating (By similarity).

## References

Hiebl-Dirschmied C.M.,et al.Biochim. Biophys. Acta 1090:123-124(1991).  
 Stewart G.W.,et al.Blood 79:1593-1601(1992).  
 Unfried I.,et al.Genomics 30:521-528(1995).  
 Gallagher P.G.,et al.J. Biol. Chem. 270:26358-26363(1995).  
 Halleck A.,et al.Submitted (JUN-2004) to the EMBL/GenBank/DDBJ databases.

## Images



All lanes : Anti-STOM Antibody (N-term) at 1/1000 dilution  
 Lane 1: human lung lysates Lane 2: Hela whole cell lysates Lane 3: HepG2 whole cell lysates Lysates/proteins at 20 µg per lane. Secondary Goat Anti-Rabbit IgG, (H+L), Peroxidase conjugated at 1/10000 dilution  
 Predicted band size : 32 kDa Blocking/Dilution buffer: 5% NFDM/TBST.

Please note: All products are 'FOR RESEARCH USE ONLY. NOT FOR USE IN DIAGNOSTIC OR THERAPEUTIC PROCEDURES'.