

ACTL6A Antibody (Center)

Purified Rabbit Polyclonal Antibody (Pab)
Catalog # AW5356

Product Information

Application	IF, WB
Primary Accession	O96019
Other Accession	P86173 , Q99MR0 , O94805 , A4FUX8 , Q9Z2N8 , Q4R333
Reactivity	Human, Mouse
Predicted	Rat, Monkey, Bovine
Host	Rabbit
Clonality	Polyclonal
Calculated MW	47 KDa
Isotype	Rabbit IgG
Antigen Source	HUMAN

Additional Information

Antigen Region	306-340
Other Names	Actin-like protein 6A, 53 kDa BRG1-associated factor A, Actin-related protein Baf53a, ArpNbeta, BRG1-associated factor 53A, BAF53A, INO80 complex subunit K, ACTL6A, BAF53, BAF53A, INO80K
Dilution	IF~~1:25 WB~~1:1000
Target/Specificity	This ACTL6A antibody is generated from a rabbit immunized with a KLH conjugated synthetic peptide between 306-340 amino acids from the Central region of human ACTL6A.
Format	Purified polyclonal antibody supplied in PBS with 0.09% (W/V) sodium azide. This antibody is purified through a protein A column, followed by peptide affinity purification.
Storage	Maintain refrigerated at 2-8°C for up to 2 weeks. For long term storage store at -20°C in small aliquots to prevent freeze-thaw cycles.
Precautions	ACTL6A Antibody (Center) is for research use only and not for use in diagnostic or therapeutic procedures.

Protein Information

Background

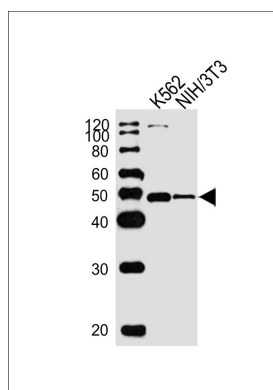
Involved in transcriptional activation and repression of select genes by chromatin remodeling (alteration of

DNA-nucleosome topology). Required for maximal ATPase activity of SMARCA4/BRG1/BAF190A and for association of the SMARCA4/BRG1/BAF190A containing remodeling complex BAF with chromatin/nuclear matrix. Belongs to the neural progenitors- specific chromatin remodeling complex (npBAF complex) and is required for the proliferation of neural progenitors. During neural development a switch from a stem/progenitor to a post- mitotic chromatin remodeling mechanism occurs as neurons exit the cell cycle and become committed to their adult state. The transition from proliferating neural stem/progenitor cells to post-mitotic neurons requires a switch in subunit composition of the npBAF and nBAF complexes. As neural progenitors exit mitosis and differentiate into neurons, npBAF complexes which contain ACTL6A/BAF53A and PHF10/BAF45A, are exchanged for homologous alternative ACTL6B/BAF53B and DPF1/BAF45B or DPF3/BAF45C subunits in neuron-specific complexes (nBAF). The npBAF complex is essential for the self-renewal/proliferative capacity of the multipotent neural stem cells. The nBAF complex along with CREST plays a role regulating the activity of genes essential for dendrite growth (By similarity). Component of the NuA4 histone acetyltransferase (HAT) complex which is involved in transcriptional activation of select genes principally by acetylation of nucleosomal histones H4 and H2A. This modification may both alter nucleosome - DNA interactions and promote interaction of the modified histones with other proteins which positively regulate transcription. This complex may be required for the activation of transcriptional programs associated with oncogene and proto-oncogene mediated growth induction, tumor suppressor mediated growth arrest and replicative senescence, apoptosis, and DNA repair. NuA4 may also play a direct role in DNA repair when recruited to sites of DNA damage. Also involved in vitamin D-coupled transcription regulation via its association with the WINAC complex, a chromatin-remodeling complex recruited by vitamin D receptor (VDR), which is required for the ligand- bound VDR-mediated transrepression of the CYP27B1 gene. Putative core component of the chromatin remodeling INO80 complex which is involved in transcriptional regulation, DNA replication and probably DNA repair.

References

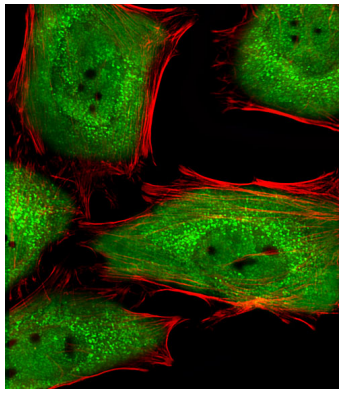
- Zhao K.,et al.Cell 95:625-636(1998).
Harata M.,et al.Biosci. Biotechnol. Biochem. 63:917-923(1999).
Harata M.,et al.Submitted (APR-2001) to the EMBL/GenBank/DDBJ databases.
Wiemann S.,et al.Genome Res. 11:422-435(2001).
Ota T.,et al.Nat. Genet. 36:40-45(2004).

Images



All lanes : Anti-ACTL6A Antibody (Center)(AW5356) at 1/1000 dilution Lane 1: K562 whole cell lysates Lane 2: NIH/3T3 whole cell lysates Lysates/proteins at 20 µg per lane. Secondary Goat Anti-Rabbit IgG, (H+L), Peroxidase conjugated at 1/10000 dilution Predicted band size : 49 kDa Blocking/Dilution buffer: 5% NFDm/TBST.

Fluorescent image of HeLa cells stained with ACTL6A Antibody (Center)(Cat#AW5356). AW5356 was diluted at 1:25 dilution. An Alexa Fluor 488-conjugated goat anti-rabbit IgG at 1:400 dilution was used as the secondary antibody (green). Cytoplasmic actin was counterstained with Alexa Fluor® 555 conjugated with Phalloidin (red).



Please note: All products are 'FOR RESEARCH USE ONLY. NOT FOR USE IN DIAGNOSTIC OR THERAPEUTIC PROCEDURES'.