

EHD4 Antibody (C-term)

Purified Rabbit Polyclonal Antibody (Pab)

Catalog # AW5329

Product Information

Application	WB
Primary Accession	Q9H223
Other Accession	Q9EQP2
Reactivity	Human, Mouse
Host	Rabbit
Clonality	polyclonal
Calculated MW	61175
Isotype	Rabbit IgG
Antigen Source	HUMAN

Additional Information

Gene ID	30844
Antigen Region	527-561
Other Names	EH domain-containing protein 4, Hepatocellular carcinoma-associated protein 10/11, PAST homolog 4, EHD4, HCA10, HCA11, PAST4
Dilution	WB~~1:1000
Target/Specificity	This EHD4 antibody is generated from a rabbit immunized with a KLH conjugated synthetic peptide between 527-561 amino acids from the C-terminal region of human EHD4.
Format	Purified polyclonal antibody supplied in PBS with 0.09% (W/V) sodium azide. This antibody is purified through a protein A column, followed by peptide affinity purification.
Storage	Maintain refrigerated at 2-8°C for up to 2 weeks. For long term storage store at -20°C in small aliquots to prevent freeze-thaw cycles.
Precautions	EHD4 Antibody (C-term) is for research use only and not for use in diagnostic or therapeutic procedures.

Protein Information

Name	EHD4 (HGNC:3245)
Function	ATP- and membrane-binding protein that probably controls membrane reorganization/tubulation upon ATP hydrolysis. Plays a role in early

endosomal transport (PubMed:[17233914](#), PubMed:[18331452](#)). During sprouting angiogenesis, in complex with PACSIN2 and MICALL1, forms recycling endosome-like tubular structure at asymmetric adherens junctions to control CDH5 trafficking (By similarity).

Cellular Location

Early endosome membrane; Peripheral membrane protein; Cytoplasmic side. Recycling endosome membrane; Peripheral membrane protein; Cytoplasmic side. Cell membrane {ECO:0000250|UniProtKB:Q9EQP2}; Peripheral membrane protein; Cytoplasmic side. Cell junction, adherens junction {ECO:0000250|UniProtKB:Q9EQP2}

Tissue Location

Highly expressed in pancreas and heart.

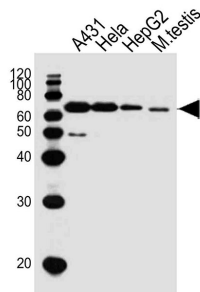
Background

Plays a role in early endosomal transport.

References

Wang Y.,et al.J. Immunol. 169:1102-1109(2002).
Wang Y.-G.,et al.Submitted (SEP-2000) to the EMBL/GenBank/DDBJ databases.
Benjamin S.,et al.Submitted (DEC-2001) to the EMBL/GenBank/DDBJ databases.
Pohl U.,et al.Genomics 63:255-262(2000).
Rush J.,et al.Nat. Biotechnol. 23:94-101(2005).

Images



Western blot analysis of lysates from A431,HeLa,HepG2 cell line,mouse testis tissue lysate (from left to right), using EHD4 Antibody (C-term)(Cat. #AW5329). AW5329 was diluted at 1:1000 at each lane. A goat anti-rabbit IgG H&L(HRP) at 1:10000 dilution was used as the secondary antibody.Lysates at 20ug per lane.

Please note: All products are 'FOR RESEARCH USE ONLY. NOT FOR USE IN DIAGNOSTIC OR THERAPEUTIC PROCEDURES'.