

SNCA Antibody (C-term)

Purified Rabbit Polyclonal Antibody (Pab)

Catalog # AW5309

Product Information

Application	FC, WB, IHC-P
Primary Accession	P37840
Reactivity	Human, Rat
Predicted	Mouse
Host	Rabbit
Clonality	Polyclonal
Calculated MW	14460
Isotype	Rabbit IgG
Antigen Source	HUMAN

Additional Information

Gene ID	6622
Antigen Region	92-125
Other Names	Alpha-synuclein, Non-A beta component of AD amyloid, Non-A4 component of amyloid precursor, NACP, SNCA, NACP, PARK1
Dilution	FC~~1:25 WB~~1:1000 IHC-P~~1:100~500
Target/Specificity	This SNCA antibody is generated from a rabbit immunized with a KLH conjugated synthetic peptide between 92-125 amino acids from the C-terminal region of human SNCA.
Format	Purified polyclonal antibody supplied in PBS with 0.09% (W/V) sodium azide. This antibody is purified through a protein A column, followed by peptide affinity purification.
Storage	Maintain refrigerated at 2-8°C for up to 2 weeks. For long term storage store at -20°C in small aliquots to prevent freeze-thaw cycles.
Precautions	SNCA Antibody (C-term) is for research use only and not for use in diagnostic or therapeutic procedures.

Protein Information

Name	SNCA
Synonyms	NACP, PARK1

Function	Neuronal protein that plays several roles in synaptic activity such as regulation of synaptic vesicle trafficking and subsequent neurotransmitter release (PubMed: 20798282 , PubMed: 26442590 , PubMed: 28288128 , PubMed: 30404828). Participates as a monomer in synaptic vesicle exocytosis by enhancing vesicle priming, fusion and dilation of exocytotic fusion pores (PubMed: 28288128 , PubMed: 30404828). Mechanistically, acts by increasing local Ca(2+) release from microdomains which is essential for the enhancement of ATP-induced exocytosis (PubMed: 30404828). Also acts as a molecular chaperone in its multimeric membrane-bound state, assisting in the folding of synaptic fusion components called SNAREs (Soluble NSF Attachment Protein REceptors) at presynaptic plasma membrane in conjunction with cysteine string protein-alpha/DNAJC5 (PubMed: 20798282). This chaperone activity is important to sustain normal SNARE-complex assembly during aging (PubMed: 20798282). Also plays a role in the regulation of the dopamine neurotransmission by associating with the dopamine transporter (DAT1) and thereby modulating its activity (PubMed: 26442590).
Cellular Location	Cytoplasm. Membrane Nucleus Synapse. Secreted. Cell projection, axon {ECO:0000250 UniProtKB:O55042}. Note=Membrane-bound in dopaminergic neurons (PubMed:15282274). Expressed and colocalized with SEPTIN4 in dopaminergic axon terminals, especially at the varicosities (By similarity). {ECO:0000250 UniProtKB:O55042, ECO:0000269 PubMed:15282274}
Tissue Location	Highly expressed in presynaptic terminals in the central nervous system. Expressed principally in brain

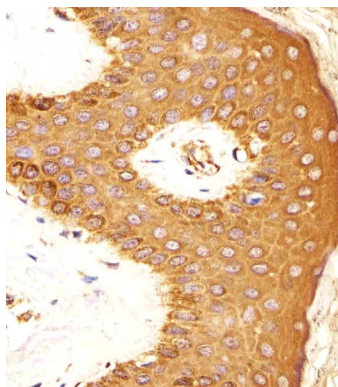
Background

May be involved in the regulation of dopamine release and transport. Induces fibrillization of microtubule-associated protein tau. Reduces neuronal responsiveness to various apoptotic stimuli, leading to a decreased caspase-3 activation.

References

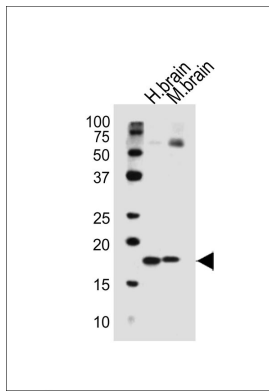
Ueda K.,et al.Proc. Natl. Acad. Sci. U.S.A. 90:11282-11286(1993).
 Campion D.,et al.Genomics 26:254-257(1995).
 Ueda K.,et al.Biochem. Biophys. Res. Commun. 205:1366-1372(1994).
 Xia Y.,et al.Submitted (JAN-1996) to the EMBL/GenBank/DDBJ databases.
 Touchman J.W.,et al.Genome Res. 11:78-86(2001).

Images

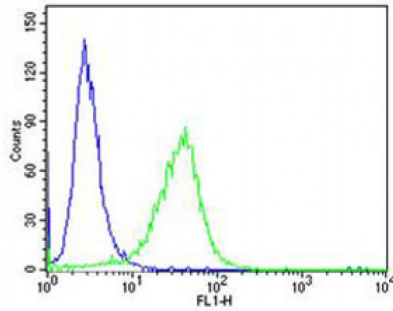


AW5309 staining SNCA in Human skin tissue sections by Immunohistochemistry (IHC-P - paraformaldehyde-fixed, paraffin-embedded sections). Tissue was fixed with formaldehyde and blocked with 3% BSA for 0.5 hour at room temperature; antigen retrieval was by heat mediation with a citrate buffer (pH6). Samples were incubated with primary antibody (1/25) for 1 hour at 37°C. A undiluted biotinylated goat polyvalent antibody was used as the secondary antibody.

Western blot analysis of lysates from human brain,mouse



brain tissue lysate (from left to right), using SNCA Antibody (C-term)(Cat. #AW5309). AW5309 was diluted at 1:1000 at each lane. A goat anti-rabbit IgG H&L(HRP) at 1:10000 dilution was used as the secondary antibody. Lysates at 20ug per lane.



Flow cytometric analysis of HeLa cells using SNCA Antibody (C-term)(green, Cat#AW5309) compared to an isotype control of rabbit IgG(blue). AW5309 was diluted at 1:25 dilution. An Alexa Fluor® 488 goat anti-rabbit IgG at 1:400 dilution was used as the secondary antibody.

Please note: All products are 'FOR RESEARCH USE ONLY. NOT FOR USE IN DIAGNOSTIC OR THERAPEUTIC PROCEDURES'.