

ESR2 Antibody (Center)

Purified Rabbit Polyclonal Antibody (Pab)
Catalog # AW5289

Product Information

Application	FC, WB
Primary Accession	Q92731
Other Accession	Q62986 , Q9XSW2 , Q9PTU5 , Q9XSB5
Reactivity	Human
Predicted	Rat, Bovine, Chicken
Host	Rabbit
Clonality	Polyclonal
Calculated MW	59 KDa
Isotype	Rabbit IgG
Antigen Source	HUMAN

Additional Information

Antigen Region	369-397
Other Names	ESR2; ESTRB; NR3A2; Estrogen receptor beta; Nuclear receptor subfamily 3 group A member 2
Dilution	FC~~1:10~50 WB~~1:1000
Target/Specificity	This ESR2 antibody is generated from rabbits immunized with a KLH conjugated synthetic peptide between 369-397 amino acids from the Central region of human ESR2.
Format	Purified polyclonal antibody supplied in PBS with 0.09% (W/V) sodium azide. This antibody is prepared by Saturated Ammonium Sulfate (SAS) precipitation followed by dialysis against PBS.
Storage	Maintain refrigerated at 2-8°C for up to 2 weeks. For long term storage store at -20°C in small aliquots to prevent freeze-thaw cycles.
Precautions	ESR2 Antibody (Center) is for research use only and not for use in diagnostic or therapeutic procedures.

Protein Information

Background

ESR2 is a nuclear hormone receptor. The protein binds estrogens with an affinity similar to that of ESR1, and activates expression of reporter genes containing estrogen response elements (ERE) in an

estrogen-dependent manner.

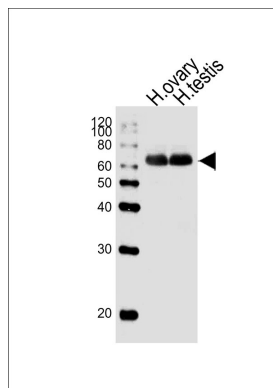
References

Chen H., Lin R.J. Cell 90:569-580(1997)

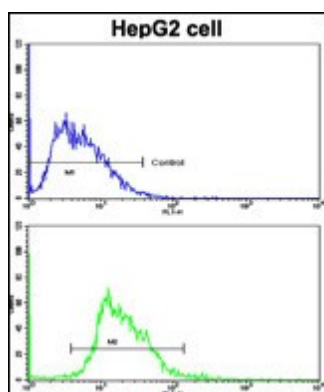
Caira F., Antonson P.J. Biol. Chem. 275:5308-5317(2000)

Bu H., Kashireddy P. Biochem. Biophys. Res. Commun. 317:54-59(2004)

Images



Western blot analysis of lysates from human ovary, human testis tissue lysate (from left to right), using ESR2 Antibody (Center) (Cat. #AW5289). AW5289 was diluted at 1:1000 at each lane. A goat anti-rabbit IgG H&L (HRP) at 1:10000 dilution was used as the secondary antibody.



Flow cytometric analysis of HepG2 cells using ESR2 Antibody (Center) (bottom histogram) compared to a negative control cell (top histogram). FITC-conjugated goat-anti-rabbit secondary antibodies were used for the analysis.

Please note: All products are 'FOR RESEARCH USE ONLY. NOT FOR USE IN DIAGNOSTIC OR THERAPEUTIC PROCEDURES'.