

ENOA Antibody (C-term)

Purified Rabbit Polyclonal Antibody (Pab)
Catalog # AW5277

Product Information

Application	IHC-P, IF, FC, WB
Primary Accession	P06733
Other Accession	Q4R5L2
Reactivity	Human, Mouse
Predicted	Rat, Monkey
Host	Rabbit
Clonality	Polyclonal
Calculated MW	47 KDa
Isotype	Rabbit IgG
Antigen Source	HUMAN

Additional Information

Antigen Region	405-434
Other Names	ENO1; ENO1L1; MBPB1; MPB1; Alpha-enolase; 2-phospho-D-glycerate hydro-lyase; C-myc promoter-binding protein; Enolase 1; MBP-1; MPB-1; Non-neural enolase; Phosphopyruvate hydratase; Plasminogen-binding protein
Dilution	IHC-P~~1:100~500 IF~~1:10~50 FC~~1:10~50 WB~~1:1000
Target/Specificity	This ENOA antibody is generated from rabbits immunized with a KLH conjugated synthetic peptide between 405-434 amino acids from the C-terminal region of human ENOA.
Format	Purified polyclonal antibody supplied in PBS with 0.09% (W/V) sodium azide. This antibody is prepared by Saturated Ammonium Sulfate (SAS) precipitation followed by dialysis against PBS.
Storage	Maintain refrigerated at 2-8°C for up to 2 weeks. For long term storage store at -20°C in small aliquots to prevent freeze-thaw cycles.
Precautions	ENOA Antibody (C-term) is for research use only and not for use in diagnostic or therapeutic procedures.

Protein Information

Background

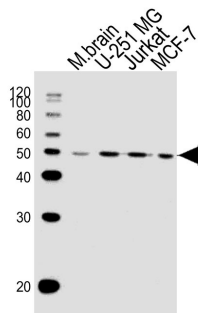
ENO1 is one of three enolase isoenzymes found in mammals; the protein alpha-enolase, a homodimeric soluble enzyme, and is also a shorter monomeric structural lens protein, tau-crystallin. The two proteins are made from the same message. The full length protein, the isoenzyme, is found in the cytoplasm. The shorter protein is produced from an alternative translation start, is localized to the nucleus, and has been found to bind to an element in the c-myc promoter.

References

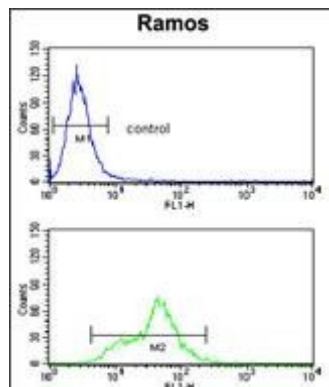
Cappello,P., Int. J. Cancer 125 (3), 639-648 (2009)

Wygrecka,M., Blood 113 (22), 5588-5598 (2009)

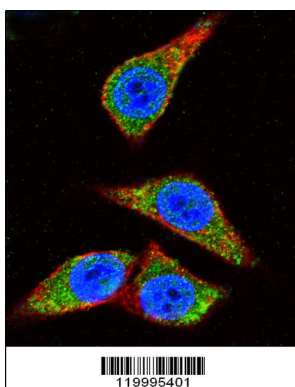
Images



Western blot analysis of lysates from mouse brain tissue,U-251 MG,Jurkat,MCF-7 cell line (from left to right), using ENOA Antibody (C-term)(Cat. #AW5277). AW5277 was diluted at 1:1000 at each lane. A goat anti-rabbit IgG H&L(HRP) at 1:10000 dilution was used as the secondary antibody.

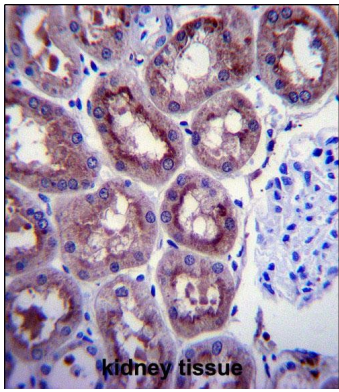


ENOA Antibody (C-term) (Cat. #AW5277) flow cytometry analysis of Ramos cells (bottom histogram) compared to a negative control cell (top histogram).FITC-conjugated goat-anti-rabbit secondary antibodies were used for the analysis.



Confocal immunofluorescent analysis of ENOA Antibody (C-term)(Cat#AW5277) with Hela cell followed by Alexa Fluor 488-conjugated goat anti-rabbit IgG (green).Actin filaments have been labeled with Alexa Fluor 555 phalloidin (red).DAPI was used to stain the cell nuclear (blue).

ENOA Antibody (C-term) (Cat. #AW5277)immunohistochemistry analysis in formalin fixed and paraffin embedded human kidney tissue followed by peroxidase conjugation of the secondary antibody and DAB staining.This data demonstrates the use of ENOA Antibody (C-term) for



immunohistochemistry. Clinical relevance has not been evaluated.

Please note: All products are 'FOR RESEARCH USE ONLY. NOT FOR USE IN DIAGNOSTIC OR THERAPEUTIC PROCEDURES'.