

Stat3 antibody

Purified Mouse Monoclonal Antibody (Mab)
Catalog # AW5231

Product Information

Application	WB
Primary Accession	P40763
Other Accession	P52631 , Q19S50 , P42227
Reactivity	Human
Predicted	Mouse, Rat
Host	Mouse
Clonality	Monoclonal
Calculated MW	88 KDa
Isotype	IgG2a, κ
Antigen Source	HUMAN

Additional Information

Antigen Region	1-280
Other Names	Signal transducer and activator of transcription 3, Acute-phase response factor, STAT3, APRF
Dilution	WB~~1:1000
Target/Specificity	This Stat3 antibody is generated from a mouse immunized with Stat3 recombinant protein.
Format	Purified monoclonal antibody supplied in PBS with 0.09% (W/V) sodium azide. This antibody is purified through a protein G column, followed by dialysis against PBS.
Storage	Maintain refrigerated at 2-8°C for up to 2 weeks. For long term storage store at -20°C in small aliquots to prevent freeze-thaw cycles.
Precautions	Stat3 antibody is for research use only and not for use in diagnostic or therapeutic procedures.

Protein Information

Background

Signal transducer and transcription activator that mediates cellular responses to interleukins, KITLG/SCF and other growth factors. May mediate cellular responses to activated FGFR1, FGFR2, FGFR3 and FGFR4. Binds to the interleukin-6 (IL-6)- responsive elements identified in the promoters of various acute- phase protein

genes. Activated by IL31 through IL31RA. Cytoplasmic STAT3 represses macroautophagy by inhibiting EIF2AK2/PKR activity. Plays an important role in host defense in methicillin-resistant S.aureus lung infection by regulating the expression of the antimicrobial lectin REG3G (By similarity).

References

Akira S.,et al.Cell 77:63-71(1994).

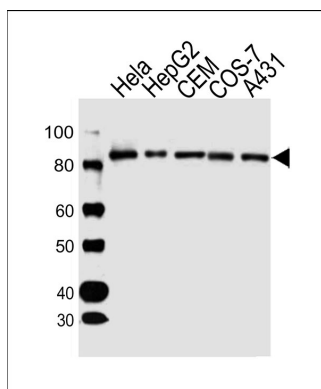
Della Pietra L.,et al.Gene 213:119-124(1998).

Ota T.,et al.Nat. Genet. 36:40-45(2004).

Della Pietra L.,et al.Submitted (OCT-1997) to the EMBL/GenBank/DDBJ databases.

Zhang X.,et al.Science 267:1990-1994(1995).

Images



Western blot analysis of lysates from HeLa,HepG2,CEM,COS-7,A431 cell line (from left to right), using Stat3 Antibody(Cat. #AW5231). AW5231 was diluted at 1:1000 at each lane. A goat anti-mouse IgG H&L(HRP) at 1:10000 dilution was used as the secondary antibody.

Please note: All products are 'FOR RESEARCH USE ONLY. NOT FOR USE IN DIAGNOSTIC OR THERAPEUTIC PROCEDURES'.