

BLMH Antibody (Center)

Affinity Purified Rabbit Polyclonal Antibody (Pab)
Catalog # AW5205

Product Information

Application	WB, IF
Primary Accession	Q13867
Other Accession	P70645 , P13019 , Q8R016
Reactivity	Human, Mouse
Predicted	Rat
Host	Rabbit
Clonality	Polyclonal
Calculated MW	53 KDa
Isotype	Rabbit IgG
Antigen Source	Human

Additional Information

Antigen Region	212-242
Other Names	BLMH;Bleomycin hydrolase
Dilution	WB~~1:1000 IF~~1:25
Target/Specificity	This BLMH antibody is generated from rabbits immunized with a KLH conjugated synthetic peptide between 212-242 amino acids from the Central region of human BLMH.
Format	Purified polyclonal antibody supplied in PBS with 0.09% (W/V) sodium azide. This antibody is purified through a protein A column, followed by peptide affinity purification.
Storage	Maintain refrigerated at 2-8°C for up to 2 weeks. For long term storage store at -20°C in small aliquots to prevent freeze-thaw cycles.
Precautions	BLMH Antibody (Center) is for research use only and not for use in diagnostic or therapeutic procedures.

Protein Information

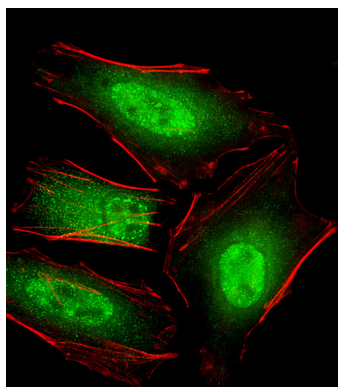
Background

The normal physiological role of BLM hydrolase is unknown, but it catalyzes the inactivation of the antitumor drug BLM (a glycopeptide) by hydrolyzing the carboxamide bond of its B-aminoalaninamide moiety thus protecting normal and malignant cells from BLM toxicity (By similarity).

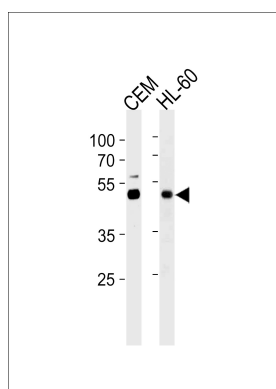
References

Barrow I.K.-P., et al. Submitted (AUG-1998) to the EMBL/GenBank/DDBJ databases.
Ferrando A.A., et al. Cancer Res. 56:1746-1750(1996).
Broemme D., et al. Biochemistry 35:6706-6714(1996).
Kalnine N., et al. Submitted (OCT-2004) to the EMBL/GenBank/DDBJ databases.
Ota T., et al. Nat. Genet. 36:40-45(2004).

Images



Fluorescent image of HeLa cells stained with BLMH Antibody (Center)(Cat#AW5205). AW5205 was diluted at 1:25 dilution. An Alexa Fluor 488-conjugated goat anti-rabbit IgG at 1:400 dilution was used as the secondary antibody (green). Cytoplasmic actin was counterstained with Alexa Fluor® 555 conjugated with Phalloidin (red).



BLMH Antibody (Center) (Cat. #AW5205) western blot analysis in CEM,HL-60 cell line lysates (35ug/lane).This demonstrates the BLMH antibody detected the BLMH protein (arrow).

Please note: All products are 'FOR RESEARCH USE ONLY. NOT FOR USE IN DIAGNOSTIC OR THERAPEUTIC PROCEDURES'.