

# Phospho-EGFR(Y1016) Antibody

Affinity Purified Rabbit Polyclonal Antibody (Pab)

Catalog # AW5157

## Product Information

---

Application	DB, WB
Primary Accession	<a href="#">P00533</a>
Other Accession	<a href="#">Q01279</a>
Reactivity	Human
Host	Rabbit
Clonality	Polyclonal
Calculated MW	134277
Isotype	Rabbit IgG
Antigen Source	HUMAN

## Additional Information

---

Gene ID	1956
Antigen Region	1000-1023
Other Names	EGFR; ERBB; ERBB1; HER1; Epidermal growth factor receptor; Proto-oncogene c-ErbB-1; Receptor tyrosine-protein kinase erbB-1
Dilution	DB~~1:500 WB~~1:8000
Target/Specificity	This EGFR Antibody is generated from rabbits immunized with a KLH conjugated synthetic phosphopeptide corresponding to amino acid residues surrounding Y1016 of human EGFR.
Format	Purified polyclonal antibody supplied in PBS with 0.09% (W/V) sodium azide. This antibody is purified through a protein A column, followed by peptide affinity purification.
Storage	Maintain refrigerated at 2-8°C for up to 2 weeks. For long term storage store at -20°C in small aliquots to prevent freeze-thaw cycles.
Precautions	Phospho-EGFR(Y1016) Antibody is for research use only and not for use in diagnostic or therapeutic procedures.

## Protein Information

---

Name	EGFR ( <a href="#">HGNC:3236</a> )
Synonyms	ERBB, ERBB1, HER1

<b>Function</b>	<p>Receptor tyrosine kinase binding ligands of the EGF family and activating several signaling cascades to convert extracellular cues into appropriate cellular responses (PubMed:<a href="#">10805725</a>, PubMed:<a href="#">27153536</a>, PubMed:<a href="#">2790960</a>, PubMed:<a href="#">35538033</a>). Known ligands include EGF, TGFA/TGF- alpha, AREG, epigen/EPGN, BTC/betacellulin, epiregulin/EREG and HBEGF/heparin-binding EGF (PubMed:<a href="#">12297049</a>, PubMed:<a href="#">15611079</a>, PubMed:<a href="#">17909029</a>, PubMed:<a href="#">20837704</a>, PubMed:<a href="#">27153536</a>, PubMed:<a href="#">2790960</a>, PubMed:<a href="#">7679104</a>, PubMed:<a href="#">8144591</a>, PubMed:<a href="#">9419975</a>). Ligand binding triggers receptor homo- and/or heterodimerization and autophosphorylation on key cytoplasmic residues. The phosphorylated receptor recruits adapter proteins like GRB2 which in turn activates complex downstream signaling cascades. Activates at least 4 major downstream signaling cascades including the RAS-RAF-MEK-ERK, PI3 kinase-AKT, PLCgamma-PKC and STATs modules (PubMed:<a href="#">27153536</a>). May also activate the NF-kappa-B signaling cascade (PubMed:<a href="#">11116146</a>). Also directly phosphorylates other proteins like RGS16, activating its GTPase activity and probably coupling the EGF receptor signaling to the G protein-coupled receptor signaling (PubMed:<a href="#">11602604</a>). Also phosphorylates MUC1 and increases its interaction with SRC and CTNNB1/beta-catenin (PubMed:<a href="#">11483589</a>). Positively regulates cell migration via interaction with CCDC88A/GIV which retains EGFR at the cell membrane following ligand stimulation, promoting EGFR signaling which triggers cell migration (PubMed:<a href="#">20462955</a>). Plays a role in enhancing learning and memory performance (By similarity). Plays a role in mammalian pain signaling (long-lasting hypersensitivity) (By similarity).</p>
<b>Cellular Location</b>	<p>Cell membrane; Single-pass type I membrane protein. Endoplasmic reticulum membrane; Single-pass type I membrane protein. Golgi apparatus membrane; Single-pass type I membrane protein. Nucleus membrane; Single-pass type I membrane protein Endosome Endosome membrane. Nucleus. Note=In response to EGF, translocated from the cell membrane to the nucleus via Golgi and ER (PubMed:17909029, PubMed:20674546). Endocytosed upon activation by ligand (PubMed:17182860, PubMed:17909029, PubMed:27153536, PubMed:2790960). Colocalized with GPER1 in the nucleus of estrogen agonist-induced cancer-associated fibroblasts (CAF) (PubMed:20551055)</p>
<b>Tissue Location</b>	<p>Ubiquitously expressed. Isoform 2 is also expressed in ovarian cancers.</p>

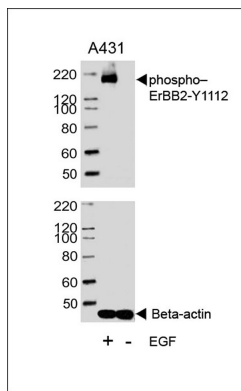
## Background

Epidermal Growth factor receptor (EGFR) is the prototype member of the type 1 receptor tyrosine kinases. EGFR overexpression in tumors indicates poor prognosis and is observed in tumors of the head and neck, brain, bladder, stomach, breast, lung, endometrium, cervix, vulva, ovary, esophagus, stomach and in squamous cell carcinoma. EGFR is a receptor for EGF, but also for other members of the EGF family, including TGF-alpha, amphiregulin, betacellulin, heparin-binding EGF-like growth factor, GP30 and vaccinia virus growth factor. It is involved in the control of cell growth and differentiation.

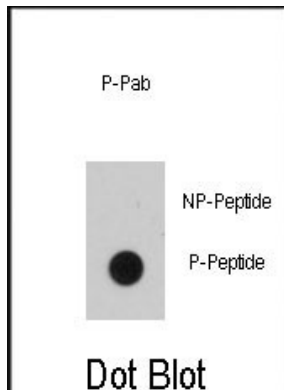
## References

- Aifa, S., et al., Exp. Cell Res. 302(1):108-114 (2005).  
 Adams, T.E., et al., Growth Factors 22(2):89-95 (2004).  
 Ichinose, J., et al., Biochem. Biophys. Res. Commun. 324(3):1143-1149 (2004).  
 Kuribayashi, A., et al., Endocrinology 145(11):4976-4984 (2004).  
 Kapoor, G.S., et al., Mol. Cell. Biol. 24(2):823-836 (2004).

## Images



Western blot analysis of extracts from A431 cells, untreated or treated with EGF, 100ng/ml, using EGFR Antibody (pY1016)(upper) or Beta-actin (lower).



Dot blot analysis of anti-EGFR B1 Phospho-specific Pab (Cat.#AW5157) on nitrocellulose membrane. 50ng of Phospho-peptide or Non Phospho-peptide per dot were adsorbed. Antibody working concentrations are 0.5ug per ml.

Please note: All products are 'FOR RESEARCH USE ONLY. NOT FOR USE IN DIAGNOSTIC OR THERAPEUTIC PROCEDURES'.