

R Ccdc89 Antibody (Center)

Affinity Purified Rabbit Polyclonal Antibody (Pab)

Catalog # AW5119

Product Information

Application	WB
Primary Accession	B2RZ86
Reactivity	Mouse, Rat, Human
Host	Rabbit
Clonality	Polyclonal
Calculated MW	43453
Isotype	Rabbit IgG
Antigen Source	Rat

Additional Information

Gene ID	293107
Antigen Region	114-145
Other Names	Ccdc89;Coiled-coil domain-containing protein 89
Dilution	WB~~1:1000
Target/Specificity	This Rat Ccdc89 antibody is generated from rabbits immunized with a KLH conjugated synthetic peptide between 114-145 amino acids from the Central region of rat Ccdc89.
Format	Purified polyclonal antibody supplied in PBS with 0.09% (W/V) sodium azide. This antibody is purified through a protein A column, followed by peptide affinity purification.
Storage	Maintain refrigerated at 2-8°C for up to 2 weeks. For long term storage store at -20°C in small aliquots to prevent freeze-thaw cycles.
Precautions	R Ccdc89 Antibody (Center) is for research use only and not for use in diagnostic or therapeutic procedures.

Protein Information

Name	Ccdc89 {ECO:0000312 EMBL:AAI67063.1, ECO:0000312 RGD:1305335}
Cellular Location	Cytoplasm {ECO:0000250 UniProtKB:Q7ZW57}. Nucleus {ECO:0000250 UniProtKB:Q7ZW57}. Note=Uniformly distributed within the cell, but becomes recruited to the nucleus upon binding to HEY1 {ECO:0000250 UniProtKB:Q7ZW57}

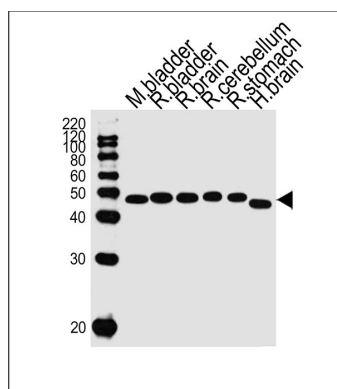
Background

The function of this protein is unknown.

References

Van Wayenbergh R., et al. Dev. Dyn. 228:716-725(2003).

Images



Western blot analysis of lysates from mouse bladder, rat bladder, rat brain, rat cerebellum, rat stomach, human brain tissue lysate (from left to right), using Ccdc89 Antibody (Center)(Cat. #AW5119). AW5119 was diluted at 1:1000 at each lane. A goat anti-rabbit IgG H&L(HRP) at 1:10000 dilution was used as the secondary antibody.

Please note: All products are 'FOR RESEARCH USE ONLY. NOT FOR USE IN DIAGNOSTIC OR THERAPEUTIC PROCEDURES'.