

RPLP0P6 Antibody (N-term)

Affinity Purified Rabbit Polyclonal Antibody (Pab)

Catalog # AW5116

Product Information

Application	IHC-P, IF, WB
Primary Accession	Q8NHW5
Other Accession	P19945 , Q29214 , P14869 , P05388 , Q9PV90 , P47826 , Q95140
Reactivity	Human
Predicted	Mouse, Rat, Zebrafish, Bovine, Chicken
Host	Rabbit
Clonality	Polyclonal
Calculated MW	34364
Isotype	Rabbit IgG
Antigen Source	Human

Additional Information

Antigen Region	1-30
Other Names	RPLP0P6;60S acidic ribosomal protein P0-like
Dilution	IHC-P~~1:100~500 IF~~1:25 WB~~1:1000
Target/Specificity	This RPLP0P6 antibody is generated from rabbits immunized with a KLH conjugated synthetic peptide between 1-30 amino acids from the N-terminal region of human RPLP0P6.
Format	Purified polyclonal antibody supplied in PBS with 0.09% (W/V) sodium azide. This antibody is purified through a protein A column, followed by peptide affinity purification.
Storage	Maintain refrigerated at 2-8°C for up to 2 weeks. For long term storage store at -20°C in small aliquots to prevent freeze-thaw cycles.
Precautions	RPLP0P6 Antibody (N-term) is for research use only and not for use in diagnostic or therapeutic procedures.

Protein Information

Name	RPLP0P6
Function	Ribosomal protein P0 is the functional equivalent of E.coli protein L10.

Background

Ribosomal protein P0 is the functional equivalent of E.coli protein L10 (By similarity).

References

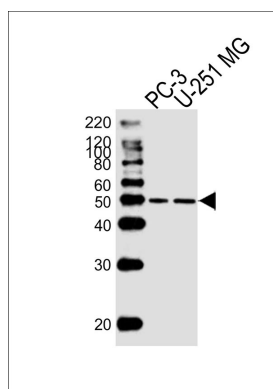
Gorry M.C., et al. Submitted (NOV-2001) to the EMBL/GenBank/DDBJ databases.

Li W.B., et al. Submitted (JUL-2004) to the EMBL/GenBank/DDBJ databases.

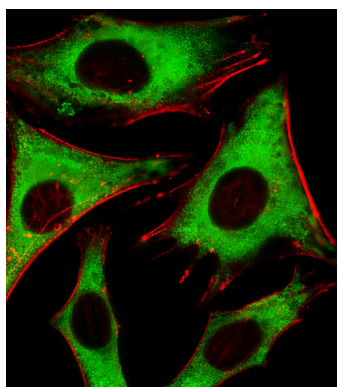
Mural R.J., et al. Submitted (SEP-2005) to the EMBL/GenBank/DDBJ databases.

Gauci S., et al. Anal. Chem. 81:4493-4501(2009).

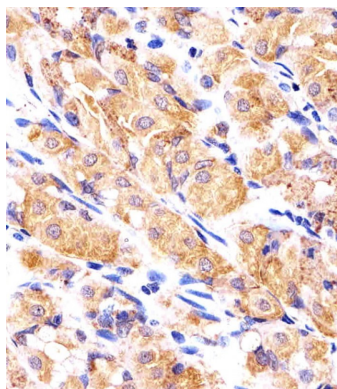
Images



Western blot analysis of lysates from PC-3,U-251 MG cell line (from left to right), using RPLP0P6Antibody(N-term)(Cat. #AW5116). AW5116 was diluted at 1:1000 at each lane. A goat anti-rabbit IgG H&L(HRP) at 1:10000 dilution was used as the secondary antibody.Lysates at 20ug per lane.



Fluorescent image of HeLa cells stained with RPLP0P6 Antibody (N-term)(Cat#AW5116). AW5116 was diluted at 1:25 dilution. An Alexa Fluor 488-conjugated goat anti-rabbit IgG at 1:400 dilution was used as the secondary antibody (green). Cytoplasmic actin was counterstained with Alexa Fluor® 555 conjugated with Phalloidin (red).



Immunohistochemical analysis of paraffin-embedded H. stomach section using RPLP0P6 Antibody (N-term)(Cat#AW5116). AW5116 was diluted at 1:25 dilution. A undiluted biotinylated goat polyvalent antibody was used as the secondary, followed by DAB staining.

Please note: All products are 'FOR RESEARCH USE ONLY. NOT FOR USE IN DIAGNOSTIC OR THERAPEUTIC PROCEDURES'.