

# CABLES2 Antibody (Center)

Affinity Purified Rabbit Polyclonal Antibody (Pab)  
Catalog # AW5114

## Product Information

---

<b>Application</b>	WB
<b>Primary Accession</b>	<a href="#">Q9BTV7</a>
<b>Other Accession</b>	<a href="#">Q8K3M5</a>
<b>Reactivity</b>	Mouse, Human
<b>Host</b>	Rabbit
<b>Clonality</b>	Polyclonal
<b>Calculated MW</b>	52 KDa
<b>Isotype</b>	Rabbit IgG
<b>Antigen Source</b>	Human

## Additional Information

---

<b>Antigen Region</b>	182-210
<b>Other Names</b>	CABLES2;C20orf150; CDK5 and ABL1 enzyme substrate 2; CDK5 and ABL1 enzyme substrate 2; Interactor with CDK3 2
<b>Dilution</b>	WB~~1:1000
<b>Target/Specificity</b>	This CABLES2 antibody is generated from rabbits immunized with a KLH conjugated synthetic peptide between 182-210 amino acids from the Central region of human CABLES2.
<b>Format</b>	Purified polyclonal antibody supplied in PBS with 0.09% (W/V) sodium azide. This antibody is purified through a protein A column, followed by peptide affinity purification.
<b>Storage</b>	Maintain refrigerated at 2-8°C for up to 2 weeks. For long term storage store at -20°C in small aliquots to prevent freeze-thaw cycles.
<b>Precautions</b>	CABLES2 Antibody (Center) is for research use only and not for use in diagnostic or therapeutic procedures.

## Protein Information

---

### Background

---

Unknown. Probably involved in G1-S cell cycle transition.

## References

---

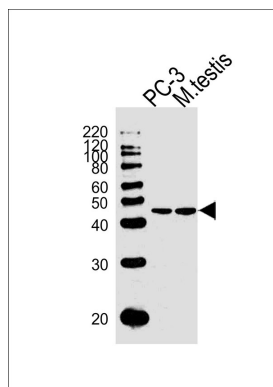
Deloukas P., et al. Nature 414:865-871(2001).

Daub H., et al. Mol. Cell 31:438-448(2008).

Oppermann F.S., et al. Mol. Cell. Proteomics 8:1751-1764(2009).

## Images

---



Western blot analysis of lysates from PC-3 cell line and mouse testis tissue(from left to right), using CABLES2Antibody(Center)(Cat. #AW5114). AW5114 was diluted at 1:1000 at each lane. A goat anti-rabbit IgG H&L(HRP) at 1:10000 dilution was used as the secondary antibody.Lysates at 20ug per lane.

Please note: All products are 'FOR RESEARCH USE ONLY. NOT FOR USE IN DIAGNOSTIC OR THERAPEUTIC PROCEDURES'.