

# CREB3L4 Antibody (M01)

Purified Mouse Monoclonal Antibody (Mab)

Catalog # AW5064

## Product Information

---

Application	WB
Primary Accession	<a href="#">Q8TEY5</a>
Reactivity	Human, Rat
Host	Mouse
Clonality	Monoclonal
Calculated MW	43432
Isotype	IgG1
Antigen Source	HUMAN

## Additional Information

---

Gene ID	148327
Antigen Region	1-310
Other Names	Cyclic AMP-responsive element-binding protein 3-like protein 4, cAMP-responsive element-binding protein 3-like protein 4, Androgen-induced basic leucine zipper protein, AIBZIP, Attaching to CRE-like 1, ATCE1, Cyclic AMP-responsive element-binding protein 4, CREB-4, cAMP-responsive element-binding protein 4.
Dilution	WB~~1:1000
Target/Specificity	This CREB3L4 antibody is generated from mice immunized with a recombinant between 1-300 amino acids from the region of human CREB3L4.
Format	Purified monoclonal antibody supplied in PBS with 0.09% (W/V) sodium azide. This antibody is purified through a protein G column, followed by dialysis against PBS.
Storage	Maintain refrigerated at 2-8°C for up to 2 weeks. For long term storage store at -20°C in small aliquots to prevent freeze-thaw cycles.
Precautions	CREB3L4 Antibody (M01) is for research use only and not for use in diagnostic or therapeutic procedures.

## Protein Information

---

Name	CREB3L4
Synonyms	AIBZIP, CREB4, JAL

<b>Function</b>	Transcriptional activator that may play a role in the unfolded protein response. Binds to the UPR element (UPRE) but not to CRE element. Preferentially binds DNA with to the consensus sequence 5'-T[GT]ACGT[GA][GT]-3' and has transcriptional activation activity from UPRE. Binds to NF-kappa-B site and has transcriptional activation activity from NF-kappa-B-containing regulatory elements (By similarity).
<b>Cellular Location</b>	Endoplasmic reticulum membrane; Single-pass type II membrane protein. Golgi apparatus membrane; Single- pass type II membrane protein. Note=May also be located in Golgi apparatus
<b>Tissue Location</b>	According to PubMed:11830526, exclusively expressed in the prostate. Expressed in breast and prostate cancer cell lines Expressed in prostatic luminal epithelial cells (at protein level) Expression is significantly more abundant in prostate cancer than in benign prostatic tissue (prostatic hyperplasia). According to PubMed:12111373, also expressed in brain, pancreas and skeletal muscle, and at lower levels in small intestine, testis, leukocyte and thymus

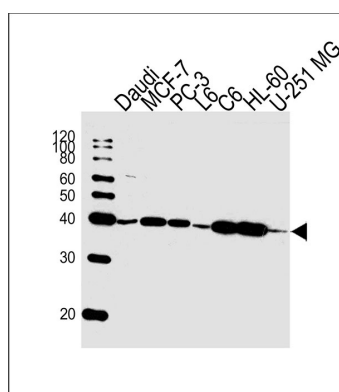
## Background

Transcriptional activator that may play a role in the unfolded protein response. Binds to the UPR element (UPRE) but not to CRE element. Preferentially binds DNA with to the consensus sequence 5'-T[GT]ACGT[GA][GT]-3' and has transcriptional activation activity from UPRE. Binds to NF-kappa-B site and has transcriptional activation activity from NF-kappa-B-containing regulatory elements (By similarity).

## References

Qi H.,et al.Cancer Res. 62:721-733(2002). Cao G.,et al.J. Hum. Genet. 47:373-376(2002). Fujita K.,et al. Submitted (DEC-2000) to the EMBL/GenBank/DDBJ databases.Guo J.H.,et al. Submitted (AUG-2001) to the EMBL/GenBank/DDBJ databases. Ota T.,et al.Nat. Genet. 36:40-45(2004).

## Images



Western blot analysis of lysates from Daudi,MCF-7,PC-3,rat L6,rat C6,HL-60,U-251 MG cell line (from left to right), using CREB3L4 Antibody (monoclonal) (M01)(Cat. #AW5064). AW5064 was diluted at 1:1000 at each lane. A goat anti-mouse IgG H&L(HRP) at 1:10000 dilution was used as the secondary antibody.Lysates at 20ug per lane.

Please note: All products are 'FOR RESEARCH USE ONLY. NOT FOR USE IN DIAGNOSTIC OR THERAPEUTIC PROCEDURES'.