

# WFDC2 Antibody (monoclonal) (M01)

Mouse monoclonal antibody raised against a full length recombinant WFDC2.

Catalog # AT4538a

## Product Information

---

Application	WB, E
Primary Accession	<a href="#">Q14508</a>
Other Accession	<a href="#">BC046106</a>
Reactivity	Human
Host	Mouse
Clonality	monoclonal
Isotype	IgG2b kappa
Clone Names	3F9
Calculated MW	12993

## Additional Information

---

Gene ID	10406
Other Names	WAP four-disulfide core domain protein 2, Epididymal secretory protein E4, Major epididymis-specific protein E4, Putative protease inhibitor WAP5, WFDC2, HE4, WAP5
Target/Specificity	WFDC2 (AAH46106.1, 31 a.a. ~ 124 a.a) full-length recombinant protein with GST tag. MW of the GST tag alone is 26 KDa.
Dilution	WB~~1:500~1000 E~~N/A
Format	Clear, colorless solution in phosphate buffered saline, pH 7.2 .
Storage	Store at -20°C or lower. Aliquot to avoid repeated freezing and thawing.
Precautions	WFDC2 Antibody (monoclonal) (M01) is for research use only and not for use in diagnostic or therapeutic procedures.

## Background

---

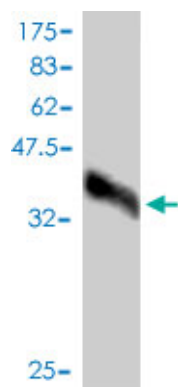
This gene encodes a protein that is a member of the WFDC domain family. The WFDC domain, or WAP Signature motif, contains eight cysteines forming four disulfide bonds at the core of the protein, and functions as a protease inhibitor in many family members. This gene is expressed in pulmonary epithelial cells, and was also found to be expressed in some ovarian cancers. The encoded protein is a small secretory protein, which may be involved in sperm maturation.

## References

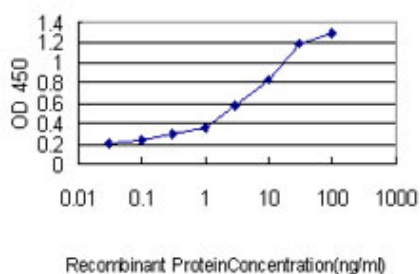
---

1.Detection of serum human epididymis secretory protein 4 in patients with ovarian cancer using a label-free biosensor based on localized surface plasmon resonance.Yuan J, Duan R, Yang H, Luo X, Xi M.Int J Nanomedicine. 2012;7:2921-8. Epub 2012 Jun 12.

## Images



Antibody Reactive Against Recombinant Protein.Western Blot detection against Immunogen (36.08 KDa) .



Detection limit for recombinant GST tagged WFDC2 is approximately 0.03ng/ml as a capture antibody.

Please note: All products are 'FOR RESEARCH USE ONLY. NOT FOR USE IN DIAGNOSTIC OR THERAPEUTIC PROCEDURES'.