

TUBB2A Antibody (monoclonal) (M03)

Mouse monoclonal antibody raised against a full-length recombinant TUBB2A.

Catalog # AT4406a

Product Information

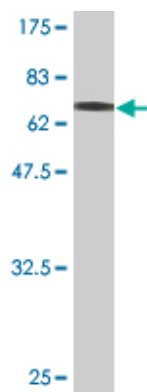
Application	WB, IHC, IF
Primary Accession	Q13885
Other Accession	BC001194
Reactivity	Human, Mouse, Rat
Host	mouse
Clonality	monoclonal
Isotype	IgG2a Kappa
Clone Names	2B2
Calculated MW	49907

Additional Information

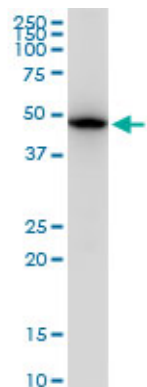
Gene ID	7280
Other Names	Tubulin beta-2A chain, Tubulin beta class IIa, TUBB2A, TUBB2
Target/Specificity	TUBB2A (AAH01194, 1 a.a. ~ 445 a.a) full-length recombinant protein with GST tag. MW of the GST tag alone is 26 KDa.
Dilution	WB~~1:500~1000 IHC~~1:100~500 IF~~1:50~200
Format	Clear, colorless solution in phosphate buffered saline, pH 7.2 .
Storage	Store at -20°C or lower. Aliquot to avoid repeated freezing and thawing.
Precautions	TUBB2A Antibody (monoclonal) (M03) is for research use only and not for use in diagnostic or therapeutic procedures.

Images

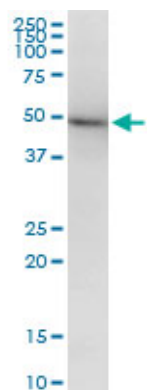
Antibody Reactive Against Recombinant Protein.Western
Blot detection against Immunogen (74.47 KDa) .



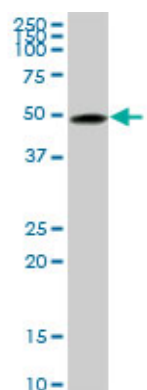
TUBB2A monoclonal antibody (M03), clone 2B2. Western Blot analysis of TUBB2A expression in PC-12((Cat # AT4406a)



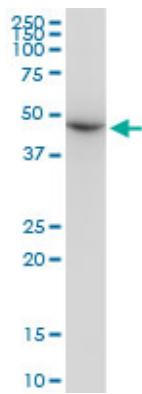
TUBB2A monoclonal antibody (M03), clone 2B2. Western Blot analysis of TUBB2A expression in Raw 264.7((Cat # AT4406a)



TUBB2A monoclonal antibody (M03), clone 2B2. Western Blot analysis of TUBB2A expression in Jurkat ((Cat # AT4406a)

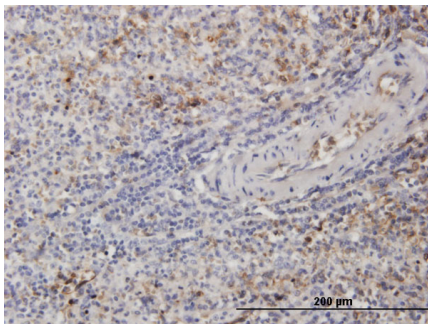
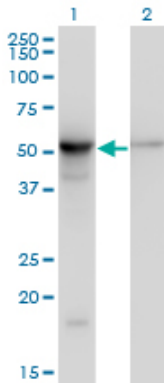


TUBB2A monoclonal antibody (M03), clone 2B2. Western Blot analysis of TUBB2A expression in NIH/3T3((Cat # AT4406a)

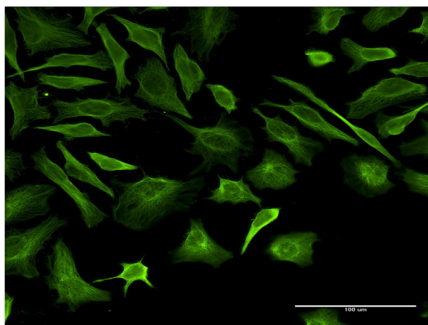


Western Blot analysis of TUBB2A expression in transfected 293T cell line by TUBB2A monoclonal antibody (M03), clone 2B2.

Lane 1: TUBB2A transfected lysate(49.9 KDa).
Lane 2: Non-transfected lysate.



Immunoperoxidase of monoclonal antibody to TUBB2A on formalin-fixed paraffin-embedded human spleen. [antibody concentration 1.5 ug/ml]



Immunofluorescence of monoclonal antibody to TUBB2A on HeLa cell . [antibody concentration 10 ug/ml]

Please note: All products are 'FOR RESEARCH USE ONLY. NOT FOR USE IN DIAGNOSTIC OR THERAPEUTIC PROCEDURES'.