

# SNRPG Antibody (monoclonal) (M01)

Mouse monoclonal antibody raised against a full length recombinant SNRPG.

Catalog # AT3983a

## Product Information

---

<b>Application</b>	WB
<b>Primary Accession</b>	<a href="#">P62308</a>
<b>Other Accession</b>	<a href="#">BC000070</a>
<b>Reactivity</b>	Human
<b>Host</b>	mouse
<b>Clonality</b>	monoclonal
<b>Isotype</b>	IgG1 Kappa
<b>Clone Names</b>	2H8-1C12
<b>Calculated MW</b>	8496

## Additional Information

---

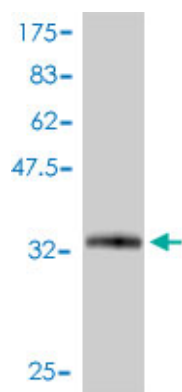
<b>Gene ID</b>	6637
<b>Other Names</b>	Small nuclear ribonucleoprotein G, snRNP-G, Sm protein G, Sm-G, SmG, SNRPG, PBSCG
<b>Target/Specificity</b>	SNRPG (AAH00070, 1 a.a. ~ 76 a.a) full-length recombinant protein with GST tag. MW of the GST tag alone is 26 KDa.
<b>Dilution</b>	WB~~1:500~1000
<b>Format</b>	Clear, colorless solution in phosphate buffered saline, pH 7.2 .
<b>Storage</b>	Store at -20°C or lower. Aliquot to avoid repeated freezing and thawing.
<b>Precautions</b>	SNRPG Antibody (monoclonal) (M01) is for research use only and not for use in diagnostic or therapeutic procedures.

## References

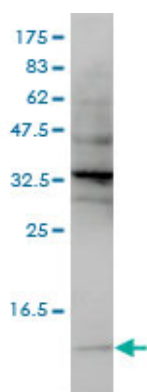
---

Systematic analysis of the protein interaction network for the human transcription machinery reveals the identity of the 7SK capping enzyme. Jeronimo C, et al. Mol Cell, 2007 Jul 20. PMID 17643375. Large-scale mapping of human protein-protein interactions by mass spectrometry. Ewing RM, et al. Mol Syst Biol, 2007. PMID 17353931. Towards a proteome-scale map of the human protein-protein interaction network. Rual JF, et al. Nature, 2005 Oct 20. PMID 16189514. A human protein-protein interaction network: a resource for annotating the proteome. Stelzl U, et al. Cell, 2005 Sep 23. PMID 16169070. The Gemin6-Gemin7 heterodimer from the survival of motor neurons complex has an Sm protein-like structure. Ma Y, et al. Structure, 2005 Jun. PMID 15939020.

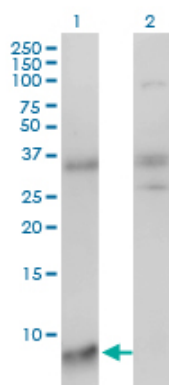
## Images



Antibody Reactive Against Recombinant Protein. Western Blot detection against Immunogen (34.1 KDa) .



SNRPG monoclonal antibody (M01), clone 2H8-1C12  
Western Blot analysis of SNRPG expression in HeLa S3 NE  
(Cat # AT3983a)



Western Blot analysis of SNRPG expression in transfected 293T cell line by SNRPG monoclonal antibody (M01), clone 2H8-1C12.

Lane 1: SNRPG transfected lysate (8.5 KDa).  
Lane 2: Non-transfected lysate.

Please note: All products are 'FOR RESEARCH USE ONLY. NOT FOR USE IN DIAGNOSTIC OR THERAPEUTIC PROCEDURES'.