

SMU1 Antibody (monoclonal) (M01)

Mouse monoclonal antibody raised against a full length recombinant SMU1.
Catalog # AT3965a

Product Information

Application	WB, IF
Primary Accession	Q2TAY7
Other Accession	BC002876
Reactivity	Human
Host	mouse
Clonality	monoclonal
Isotype	IgG2b kappa
Clone Names	2B12-2F2
Calculated MW	57544

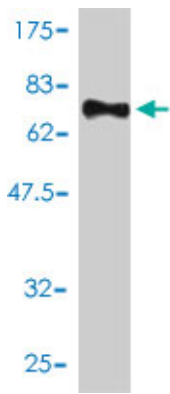
Additional Information

Gene ID	55234
Other Names	WD40 repeat-containing protein SMU1, Smu-1 suppressor of mec-8 and unc-52 protein homolog, WD40 repeat-containing protein SMU1, N-terminally processed, SMU1
Target/Specificity	SMU1 (AAH02876, 1 a.a. ~ 513 a.a) full-length recombinant protein with GST tag. MW of the GST tag alone is 26 KDa.
Dilution	WB~~1:500~1000 IF~~1:50~200
Format	Clear, colorless solution in phosphate buffered saline, pH 7.2 .
Storage	Store at -20°C or lower. Aliquot to avoid repeated freezing and thawing.
Precautions	SMU1 Antibody (monoclonal) (M01) is for research use only and not for use in diagnostic or therapeutic procedures.

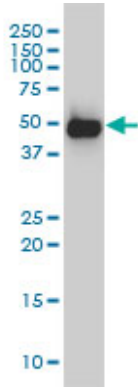
References

1.Loss of Smu1 function de-represses DNA replication and over-activates ATR-dependent replication checkpoint.Surnameren G, Surnameliu G, Surnameguo G, Surnamewang G, Surnamema G, Surnamezeng G, Surnameshao G, Surnameyang G, Surnametang G, Surnamewang G, Surnameliu G, Surnameli GBiochem Biophys Res Commun. 2013 May 29. pii: S0006-291X(13)00868-1. doi: 10.1016/j.bbrc.2013.05.072.

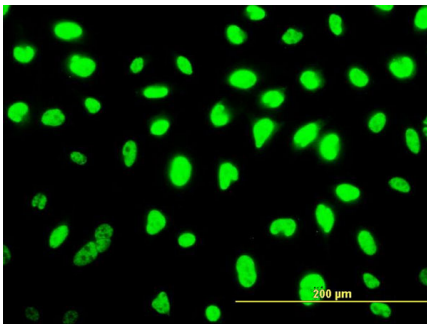
Images



Antibody Reactive Against Recombinant Protein. Western Blot detection against Immunogen (82.17 KDa) .



SMU1 monoclonal antibody (M01), clone 2B12-2F2
Western Blot analysis of SMU1 expression in HeLa S3 NE (Cat # AT3965a)



Immunofluorescence of monoclonal antibody to SMU1 on HeLa cell. [antibody concentration 10 ug/ml]

Citations

- [CRL7SMU1 E3 ligase complex driven H2B ubiquitination functions in sister chromatid cohesion by regulating SMC1 expression.](#)

Please note: All products are 'FOR RESEARCH USE ONLY. NOT FOR USE IN DIAGNOSTIC OR THERAPEUTIC PROCEDURES'.