

SMOC1 Antibody (monoclonal) (M03)

Mouse monoclonal antibody raised against a partial recombinant SMOC1.

Catalog # AT3961a

Product Information

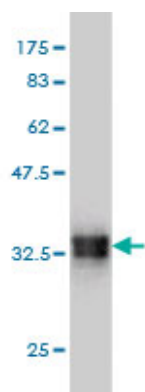
Application	WB, IF, E
Primary Accession	Q9H4F8
Other Accession	NM_022137
Reactivity	Human
Host	mouse
Clonality	monoclonal
Isotype	IgG2a Kappa
Clone Names	8F10
Calculated MW	48163

Additional Information

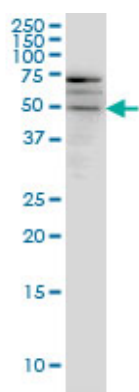
Gene ID	64093
Other Names	SPARC-related modular calcium-binding protein 1, Secreted modular calcium-binding protein 1, SMOC-1, SMOC1
Target/Specificity	SMOC1 (NP_071420, 150 a.a. ~ 221 a.a) partial recombinant protein with GST tag. MW of the GST tag alone is 26 KDa.
Dilution	WB~~1:500~1000 IF~~1:50~200 E~~N/A
Format	Clear, colorless solution in phosphate buffered saline, pH 7.2 .
Storage	Store at -20°C or lower. Aliquot to avoid repeated freezing and thawing.
Precautions	SMOC1 Antibody (monoclonal) (M03) is for research use only and not for use in diagnostic or therapeutic procedures.

References

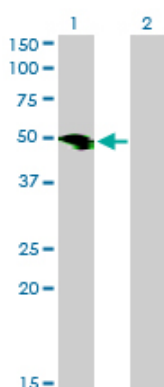
A whole genome scan for pulse pressure/stroke volume ratio in African Americans: the HyperGEN study. Sherva R, et al. Am J Hypertens, 2007 Apr. PMID 17386346. The status, quality, and expansion of the NIH full-length cDNA project: the Mammalian Gene Collection (MGC). Gerhard DS, et al. Genome Res, 2004 Oct. PMID 15489334. The DNA sequence and analysis of human chromosome 14. Heilig R, et al. Nature, 2003 Feb 6. PMID 12508121. Generation and initial analysis of more than 15,000 full-length human and mouse cDNA sequences. Strausberg RL, et al. Proc Natl Acad Sci U S A, 2002 Dec 24. PMID 12477932. Characterization of SMOC-1, a novel modular calcium-binding protein in basement membranes. Vannahme C, et al. J Biol Chem, 2002 Oct 11. PMID 12130637.



Antibody Reactive Against Recombinant Protein. Western Blot detection against Immunogen (33.66 KDa) .

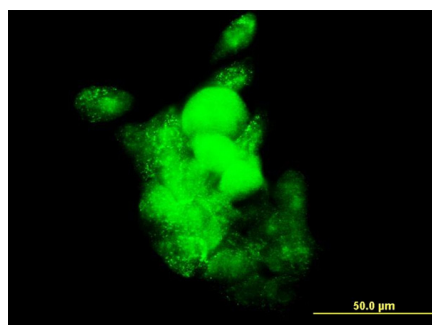


SMOC1 monoclonal antibody (M03), clone 8F10 Western Blot analysis of SMOC1 expression in A-431 (Cat # AT3961a)



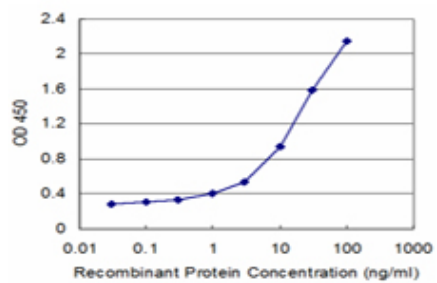
Western Blot analysis of SMOC1 expression in transfected 293T cell line by SMOC1 monoclonal antibody (M03), clone 8F10.

Lane 1: SMOC1 transfected lysate(48.3 KDa).
Lane 2: Non-transfected lysate.



Immunofluorescence of monoclonal antibody to SMOC1 on A-431 cell. [antibody concentration 10 ug/ml]

Detection limit for recombinant GST tagged SMOC1 is approximately 1ng/ml as a capture antibody.



Please note: All products are 'FOR RESEARCH USE ONLY. NOT FOR USE IN DIAGNOSTIC OR THERAPEUTIC PROCEDURES'.