

SIX2 Antibody (monoclonal) (M01)

Mouse monoclonal antibody raised against a full length recombinant SIX2.

Catalog # AT3892a

Product Information

Application	WB, IF, E
Primary Accession	Q9NPC8
Other Accession	BC024033
Reactivity	Human
Host	mouse
Clonality	monoclonal
Isotype	IgG1 kappa
Clone Names	3D7
Calculated MW	32286

Additional Information

Gene ID	10736
Other Names	Homeobox protein SIX2, Sine oculis homeobox homolog 2, SIX2
Target/Specificity	SIX2 (AAH24033, 1 a.a. ~ 291 a.a) full-length recombinant protein with GST tag. MW of the GST tag alone is 26 KDa.
Dilution	WB~~1:500~1000 IF~~1:50~200 E~~N/A
Format	Clear, colorless solution in phosphate buffered saline, pH 7.2 .
Storage	Store at -20°C or lower. Aliquot to avoid repeated freezing and thawing.
Precautions	SIX2 Antibody (monoclonal) (M01) is for research use only and not for use in diagnostic or therapeutic procedures.

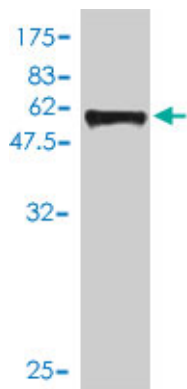
Background

This gene is a member of the vertebrate gene family which encode proteins homologous to the Drosophila 'sine oculis' homeobox protein. The encoded protein is a transcription factor which, like other members of this gene family, may be involved in limb or eye development.

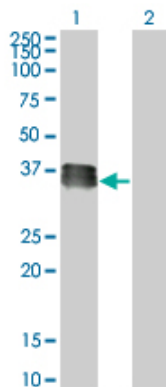
References

1.Mdm2 is required for maintenance of the nephrogenic niche.Hilliard SA, Yao X, El-Dahr SSDev Biol. 2014 Jan 17. pii: S0012-1606(14)00024-4. doi: 10.1016/j.ydbio.2014.01.009.2.SIX2 and CITED1, markers of nephronic progenitor self-renewal, remain active in primitive elements of Wilms' tumor.Murphy AJ, Pierce J, de Caestecker C, Taylor C, Anderson JR, Perantoni AO, de Caestecker MP, Lowvorn HN 3rd.J Pediatr Surg.

Images

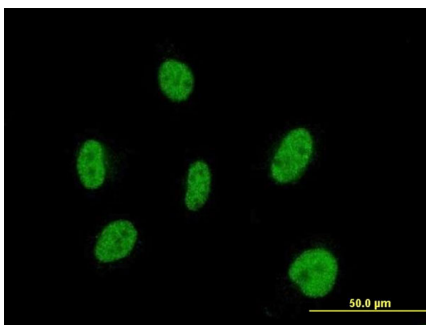


Antibody Reactive Against Recombinant Protein. Western Blot detection against Immunogen (57.75 KDa) .

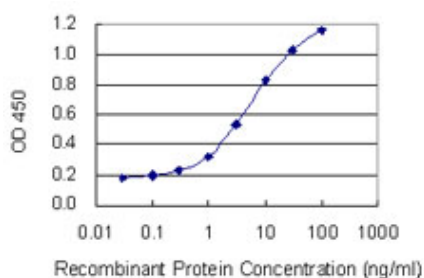


Western Blot analysis of SIX2 expression in transfected 293T cell line by SIX2 monoclonal antibody (M01), clone 3D7.

Lane 1: SIX2 transfected lysate (32.3 KDa).
Lane 2: Non-transfected lysate.

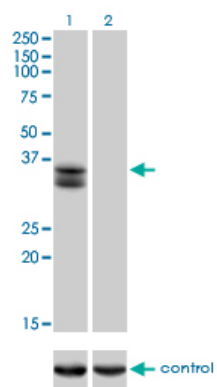


Immunofluorescence of monoclonal antibody to SIX2 on HeLa cell . [antibody concentration 10 ug/ml]



Detection limit for recombinant GST tagged SIX2 is 0.03 ng/ml as a capture antibody.

Western blot analysis of SIX2 over-expressed 293 cell line, cotransfected with SIX2 Validated Chimera RNAi (Cat # AT3892a)



Please note: All products are 'FOR RESEARCH USE ONLY. NOT FOR USE IN DIAGNOSTIC OR THERAPEUTIC PROCEDURES'.