

SH2B Antibody (monoclonal) (M01)

Mouse monoclonal antibody raised against a partial recombinant SH2B.
Catalog # AT3861a

Product Information

Application	WB, IF, E
Primary Accession	Q9NRF2
Other Accession	BC010704
Reactivity	Human
Host	mouse
Clonality	monoclonal
Isotype	IgG1 Kappa
Clone Names	2B9
Calculated MW	79366

Additional Information

Gene ID	25970
Other Names	SH2B adapter protein 1, Pro-rich, PH and SH2 domain-containing signaling mediator, PSM, SH2 domain-containing protein 1B, SH2B1, KIAA1299, SH2B
Target/Specificity	SH2B (AAH10704, 327 a.a. ~ 426 a.a) partial recombinant protein with GST tag. MW of the GST tag alone is 26 KDa.
Dilution	WB~~1:500~1000 IF~~1:50~200 E~~N/A
Format	Clear, colorless solution in phosphate buffered saline, pH 7.2 .
Storage	Store at -20°C or lower. Aliquot to avoid repeated freezing and thawing.
Precautions	SH2B Antibody (monoclonal) (M01) is for research use only and not for use in diagnostic or therapeutic procedures.

Background

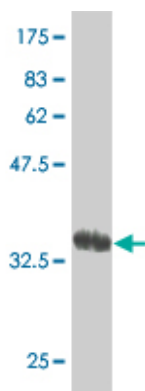
This gene encodes a member of the SH2-domain containing mediators family. The encoded protein mediates activation of various kinases and may function in cytokine and growth factor receptor signaling and cellular transformation. Alternatively spliced transcript variants have been described.

References

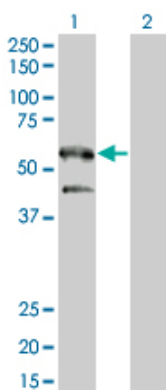
Evaluation of genetic susceptibility loci for obesity in Chinese women. Shi J, et al. Am J Epidemiol, 2010 Aug 1. PMID 20616199. Evaluating the discriminative power of multi-trait genetic risk scores for type 2 diabetes in a northern Swedish population. Fontaine-Bisson B, et al. Diabetologia, 2010 Oct. PMID 20571754. Genes and

lifestyle factors in obesity: results from 12 462 subjects from MONICA/KORA. Holzapfel C, et al. Int J Obes (Lond), 2010 Apr 13. PMID 20386550. Implication of genetic variants near NEGR1, SEC16B, TMEM18, ETV5/DGKG, GNPDA2, LIN7C/BDNF, MTCH2, BCDIN3D/FAIM2, SH2B1, FTO, MC4R, and KCTD15 with obesity and type 2 diabetes in 7705 Chinese. Ng MC, et al. J Clin Endocrinol Metab, 2010 May. PMID 20215397. Novel obesity risk loci do not determine distribution of body fat depots: a whole-body MRI/MRS study. Haupt A, et al. Obesity (Silver Spring), 2010 Jun. PMID 19910938.

Images



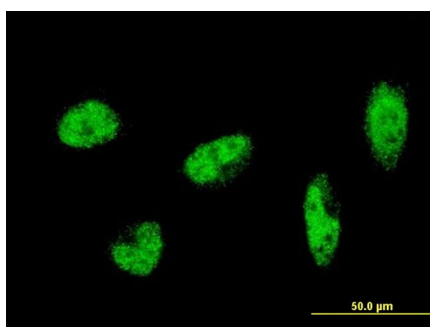
Antibody Reactive Against Recombinant Protein. Western Blot detection against Immunogen (36.63 KDa) .



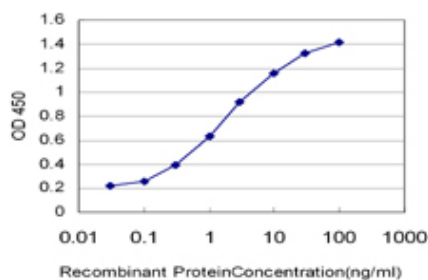
Western Blot analysis of SH2B1 expression in transfected 293T cell line by SH2B1 monoclonal antibody (M01), clone 2B9.

Lane 1: SH2B1 transfected lysate (52.917 KDa).

Lane 2: Non-transfected lysate.



Immunofluorescence of monoclonal antibody to SH2B1 on HeLa cell . [antibody concentration 10 μg/ml]



Detection limit for recombinant GST tagged SH2B1 is approximately 0.03 ng/ml as a capture antibody.

Please note: All products are 'FOR RESEARCH USE ONLY. NOT FOR USE IN DIAGNOSTIC OR THERAPEUTIC PROCEDURES'.