

SF1 Antibody (monoclonal) (M01)

Mouse monoclonal antibody raised against a partial recombinant SF1.

Catalog # AT3835a

Product Information

Application	WB, IHC, IF, IP, E
Primary Accession	Q15637
Other Accession	NM_004630
Reactivity	Human, Mouse
Host	mouse
Clonality	monoclonal
Isotype	IgG2a Kappa
Clone Names	2.0E+12
Calculated MW	68330

Additional Information

Gene ID	7536
Other Names	Splicing factor 1, Mammalian branch point-binding protein, BBP, mBBP, Transcription factor ZFM1, Zinc finger gene in MEN1 locus, Zinc finger protein 162, SF1, ZFM1, ZNF162
Target/Specificity	SF1 (NP_004621, 1 a.a. ~ 110 a.a) partial recombinant protein with GST tag. MW of the GST tag alone is 26 KDa.
Dilution	WB~~1:500~1000 IHC~~1:100~500 IF~~1:50~200 IP~~N/A E~~N/A
Format	Clear, colorless solution in phosphate buffered saline, pH 7.2 .
Storage	Store at -20°C or lower. Aliquot to avoid repeated freezing and thawing.
Precautions	SF1 Antibody (monoclonal) (M01) is for research use only and not for use in diagnostic or therapeutic procedures.

Background

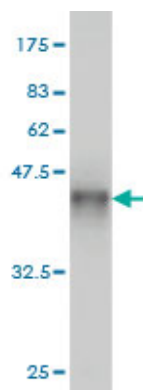
This gene encodes a nuclear pre-mRNA splicing factor. The encoded protein specifically recognizes the intron branch point sequence and is required for the early stages of spliceosome assembly. Alternate splicing results in multiple transcript variants.

References

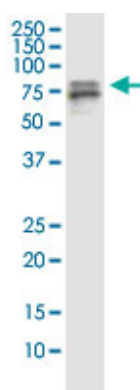
SEDLIN forms homodimers: characterisation of SEDLIN mutations and their interactions with transcription factors MBP1, PITX1 and SF1. Jeyabalan J, et al. PLoS One, 2010 May 14. PMID 20498720. Dimerization and

protein binding specificity of the U2AF homology motif of the splicing factor Puf60. Corsini L, et al. J Biol Chem, 2009 Jan 2. PMID 18974054. Search for cellular partners of human papillomavirus type 16 E2 protein. Olejnik-Schmidt AK, et al. Arch Virol, 2008. PMID 18305892. Splicing factors SF1 and U2AF associate in extraspliceosomal complexes. Rino J, et al. Mol Cell Biol, 2008 May. PMID 18285458. Toward a confocal subcellular atlas of the human proteome. Barbe L, et al. Mol Cell Proteomics, 2008 Mar. PMID 18029348.

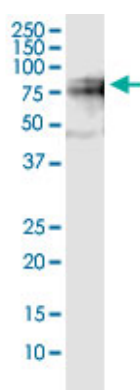
Images



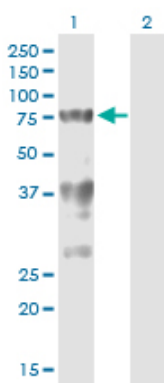
Antibody Reactive Against Recombinant Protein. Western Blot detection against Immunogen (37.84 kDa) .



SF1 monoclonal antibody (M01), clone 2E12. Western Blot analysis of SF1 expression in HeLa.

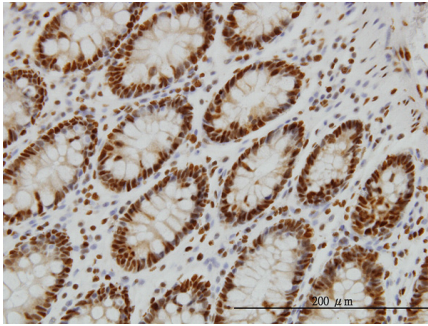


SF1 monoclonal antibody (M01), clone 2E12. Western Blot analysis of SF1 expression in NIH/3T3.

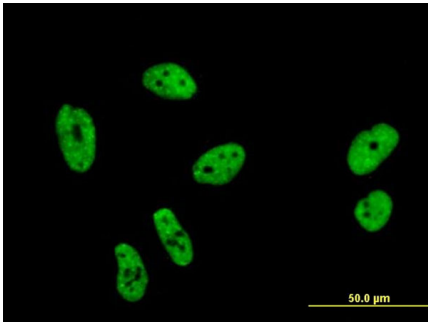


Western Blot analysis of SF1 expression in transfected 293T cell line by SF1 monoclonal antibody (M01), clone 2E12.

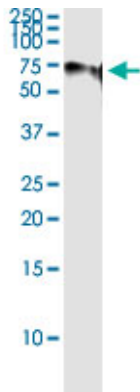
Lane 1: SF1 transfected lysate (Predicted MW: 59.7 kDa).
Lane 2: Non-transfected lysate.



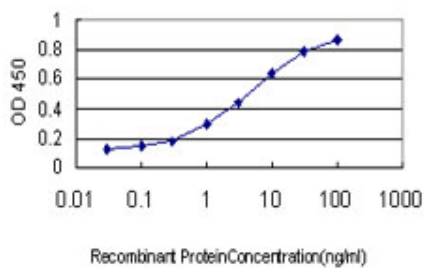
Immunoperoxidase of monoclonal antibody to SF1 on formalin-fixed paraffin-embedded human colon. [antibody concentration 3 ug/ml]



Immunofluorescence of monoclonal antibody to SF1 on HeLa cell . [antibody concentration 10 ug/ml]



Immunoprecipitation of SF1 transfected lysate using anti-SF1 monoclonal antibody and Protein A Magnetic Bead ([U0007](#)), and immunoblotted with SF1 monoclonal antibody.



Detection limit for recombinant GST tagged SF1 is approximately 0.03ng/ml as a capture antibody.

Please note: All products are 'FOR RESEARCH USE ONLY. NOT FOR USE IN DIAGNOSTIC OR THERAPEUTIC PROCEDURES'.