

SEMA4B Antibody (monoclonal) (M03)

Mouse monoclonal antibody raised against a partial recombinant SEMA4B.

Catalog # AT3807a

Product Information

Application	WB, E
Primary Accession	Q9NPR2
Other Accession	NM_020210
Reactivity	Human
Host	mouse
Clonality	monoclonal
Isotype	IgG2a Kappa
Clone Names	4B2
Calculated MW	92766

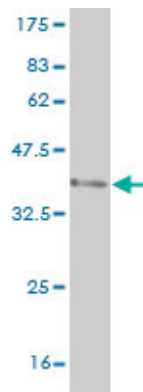
Additional Information

Gene ID	10509
Other Names	Semaphorin-4B, SEMA4B, KIAA1745, SEMAC
Target/Specificity	SEMA4B (NP_064595, 592 a.a. ~ 689 a.a) partial recombinant protein with GST tag. MW of the GST tag alone is 26 KDa.
Dilution	WB~~1:500~1000 E~~N/A
Format	Clear, colorless solution in phosphate buffered saline, pH 7.2 .
Storage	Store at -20°C or lower. Aliquot to avoid repeated freezing and thawing.
Precautions	SEMA4B Antibody (monoclonal) (M03) is for research use only and not for use in diagnostic or therapeutic procedures.

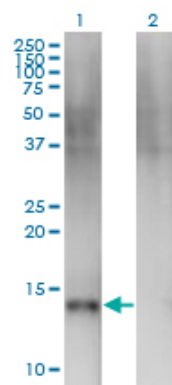
References

Variation at the NFATC2 Locus Increases the Risk of Thiazolinedinedione-Induced Edema in the Diabetes REduction Assessment with ramipril and rosiglitazone Medication (DREAM) Study. Bailey SD, et al. Diabetes Care, 2010 Jul 13. PMID 20628086. Gene-centric association signals for lipids and apolipoproteins identified via the HumanCVD BeadChip. Talmud PJ, et al. Am J Hum Genet, 2009 Nov. PMID 19913121. CLCP1 interacts with semaphorin 4B and regulates motility of lung cancer cells. Nagai H, et al. Oncogene, 2007 Jun 7. PMID 17213806. Global, in vivo, and site-specific phosphorylation dynamics in signaling networks. Olsen JV, et al. Cell, 2006 Nov 3. PMID 17081983. Human plasma N-glycoproteome analysis by immunoaffinity subtraction, hydrazide chemistry, and mass spectrometry. Liu T, et al. J Proteome Res, 2005 Nov-Dec. PMID 16335952.

Images



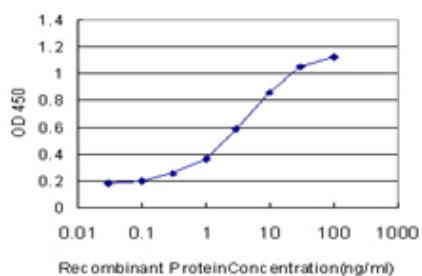
Antibody Reactive Against Recombinant Protein. Western Blot detection against Immunogen (36.52 KDa) .



Western Blot analysis of SEMA4B expression in transfected 293T cell line by SEMA4B monoclonal antibody (M03), clone 4B2.

Lane 1: SEMA4B transfected lysate (Predicted MW: 10.89 KDa).

Lane 2: Non-transfected lysate.



Detection limit for recombinant GST tagged SEMA4B is approximately 0.1 ng/ml as a capture antibody.

Please note: All products are 'FOR RESEARCH USE ONLY. NOT FOR USE IN DIAGNOSTIC OR THERAPEUTIC PROCEDURES'.