

SDSL Antibody (monoclonal) (M02)

Mouse monoclonal antibody raised against a full length recombinant SDSL.
Catalog # AT3804a

Product Information

Application	WB, IHC, E
Primary Accession	Q96GA7
Other Accession	BC009849.1
Reactivity	Human
Host	mouse
Clonality	monoclonal
Isotype	IgG2a Kappa
Clone Names	M2
Calculated MW	34674

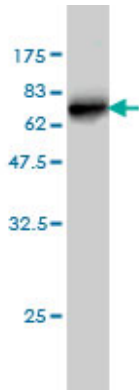
Additional Information

Gene ID	113675
Other Names	Serine dehydratase-like, L-serine deaminase, L-serine dehydratase/L-threonine deaminase, L-threonine dehydratase, TDH, Serine dehydratase 2, SDH 2, SDSL
Target/Specificity	SDSL (AAH09849.1, 1 a.a. ~ 329 a.a) full-length recombinant protein with GST tag. MW of the GST tag alone is 26 KDa.
Dilution	WB~~1:500~1000 IHC~~1:100~500 E~~N/A
Format	Clear, colorless solution in phosphate buffered saline, pH 7.2 .
Storage	Store at -20°C or lower. Aliquot to avoid repeated freezing and thawing.
Precautions	SDSL Antibody (monoclonal) (M02) is for research use only and not for use in diagnostic or therapeutic procedures.

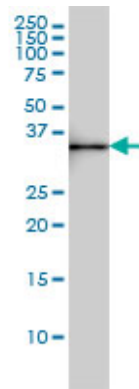
References

A catalytic mechanism that explains a low catalytic activity of serine dehydratase like-1 from human cancer cells: crystal structure and site-directed mutagenesis studies. Yamada T, et al. *Biochim Biophys Acta*, 2008 May. PMID 18342636. Towards a proteome-scale map of the human protein-protein interaction network. Rual JF, et al. *Nature*, 2005 Oct 20. PMID 16189514. The status, quality, and expansion of the NIH full-length cDNA project: the Mammalian Gene Collection (MGC). Gerhard DS, et al. *Genome Res*, 2004 Oct. PMID 15489334. Generation and initial analysis of more than 15,000 full-length human and mouse cDNA sequences. Strausberg RL, et al. *Proc Natl Acad Sci U S A*, 2002 Dec 24. PMID 12477932.

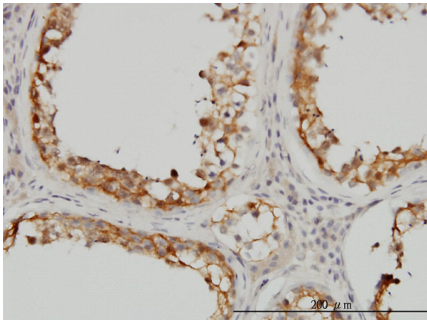
Images



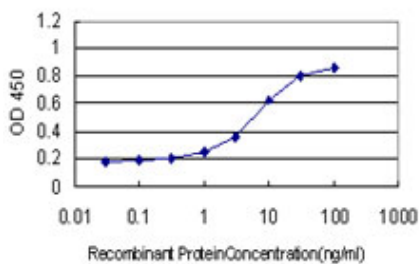
Antibody Reactive Against Recombinant Protein. Western Blot detection against Immunogen (61.93 KDa) .



SDSL monoclonal antibody (M02), clone M2 Western Blot analysis of SDSL expression in HepG2 ((Cat # AT3804a)



Immunoperoxidase of monoclonal antibody to SDSL on formalin-fixed paraffin-embedded human testis. [antibody concentration 3 μ g/ml]



Detection limit for recombinant GST tagged SDSL is approximately 0.1 ng/ml as a capture antibody.

Please note: All products are 'FOR RESEARCH USE ONLY. NOT FOR USE IN DIAGNOSTIC OR THERAPEUTIC PROCEDURES'.