

## SCN8A Antibody (monoclonal) (M04)

Mouse monoclonal antibody raised against a partial recombinant SCN8A.

Catalog # AT3794a

### Product Information

---

Application	WB, IF
Primary Accession	<a href="#">Q9UQD0</a>
Other Accession	<a href="#">NM_014191</a>
Reactivity	Human
Host	mouse
Clonality	monoclonal
Isotype	IgG2a Kappa
Clone Names	4G7
Calculated MW	225280

### Additional Information

---

Gene ID	6334
Other Names	Sodium channel protein type 8 subunit alpha, Sodium channel protein type VIII subunit alpha, Voltage-gated sodium channel subunit alpha Nav16, SCN8A, MED
Target/Specificity	SCN8A (NP_055006, 1854 a.a. ~ 1951 a.a) partial recombinant protein with GST tag. MW of the GST tag alone is 26 KDa.
Dilution	WB~~1:500~1000 IF~~1:50~200
Format	Clear, colorless solution in phosphate buffered saline, pH 7.2 .
Storage	Store at -20°C or lower. Aliquot to avoid repeated freezing and thawing.
Precautions	SCN8A Antibody (monoclonal) (M04) is for research use only and not for use in diagnostic or therapeutic procedures.

### Background

---

This gene encodes a member of the sodium channel alpha subunit gene family. The encoded protein forms the ion pore region of the voltage-gated sodium channel. This protein is essential for the rapid membrane depolarization that occurs during the formation of the action potential in excitable neurons. Mutations in this gene are associated with mental retardation, pancerebellar atrophy and ataxia. Alternate splicing results in multiple transcript variants.

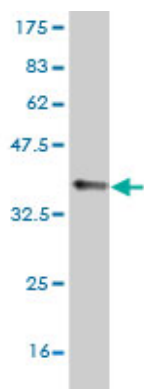
### References

---

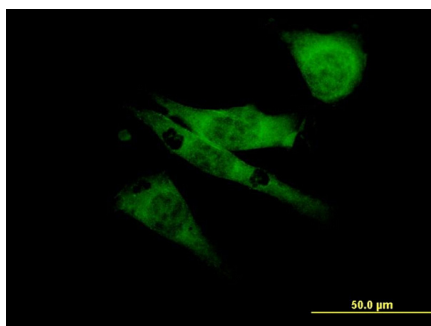
1.Na(v)1.1 localizes to axons of parvalbumin-positive inhibitory interneurons: a circuit basis for epileptic seizures in mice carrying an Scn1a gene mutation.Ogiwara I, Miyamoto H, Morita N, Atapour N, Mazaki E, Inoue I, Takeuchi T, Itohara S, Yanagawa Y, Obata K, Furuichi T, Hensch TK, Yamakawa K.J Neurosci. 2007 May 30;27(22):5903-14.

## Images

---



Antibody Reactive Against Recombinant Protein.Western Blot detection against Immunogen (36.52 KDa) .



Immunofluorescence of monoclonal antibody to SCN8A on NIH/3T3 cell. [antibody concentration 10 ug/ml]

Please note: All products are 'FOR RESEARCH USE ONLY. NOT FOR USE IN DIAGNOSTIC OR THERAPEUTIC PROCEDURES'.