

RNF12 Antibody (monoclonal) (M01)

Mouse monoclonal antibody raised against a partial recombinant RNF12.

Catalog # AT3658a

Product Information

Application	WB, IF, IP, E
Primary Accession	Q9NWW2
Other Accession	NM_016120
Reactivity	Human
Host	Mouse
Clonality	monoclonal
Isotype	IgG2a Kappa
Clone Names	1G10
Calculated MW	68549

Additional Information

Gene ID	51132
Other Names	E3 ubiquitin-protein ligase RLIM, 632-, LIM domain-interacting RING finger protein, RING finger LIM domain-binding protein, R-LIM, RING finger protein 12, Renal carcinoma antigen NY-REN-43, RLIM, RNF12
Target/Specificity	RNF12 (NP_057204, 1 a.a. ~ 83 a.a) partial recombinant protein with GST tag. MW of the GST tag alone is 26 KDa.
Dilution	WB~~1:500~1000 IF~~1:50~200 IP~~N/A E~~N/A
Format	Clear, colorless solution in phosphate buffered saline, pH 7.2 .
Storage	Store at -20°C or lower. Aliquot to avoid repeated freezing and thawing.
Precautions	RNF12 Antibody (monoclonal) (M01) is for research use only and not for use in diagnostic or therapeutic procedures.

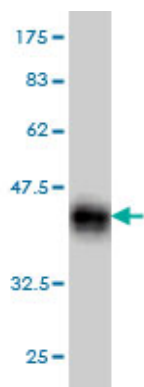
Background

The protein encoded by this gene is a RING-H2 zinc finger protein. It has been shown to be an E3 ubiquitin protein ligase that targets LIM domain binding 1 (LDB1/CLIM), and causes proteasome-dependent degradation of LDB1. This protein and LDB1 are co-repressors of LHX1/LIM-1, a homeodomain transcription factor. Multiple alternatively spliced variants, encoding the same protein, have been identified.

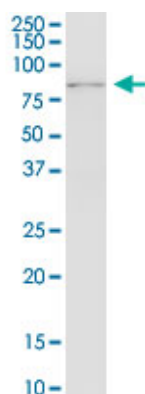
References

- 1.Nuclear receptor NR4A1 promotes breast cancer invasion and metastasis by activating TGF- β

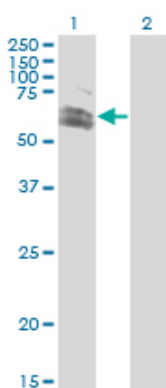
Images



Antibody Reactive Against Recombinant Protein. Western Blot detection against Immunogen (34.87 KDa) .



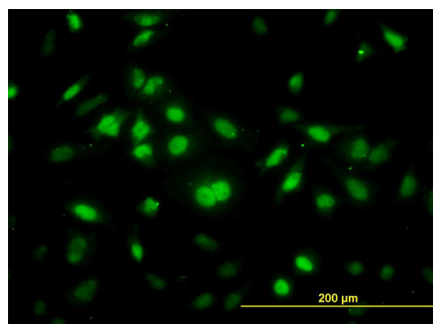
RNF12 monoclonal antibody (M01), clone 1G10. Western Blot analysis of RNF12 expression in HeLa S3 NE.



Western Blot analysis of RNF12 expression in transfected 293T cell line by RNF12 monoclonal antibody (M01), clone 1G10.

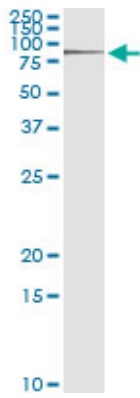
Lane 1: RNF12 transfected lysate (Predicted MW: 68.5 KDa).

Lane 2: Non-transfected lysate.

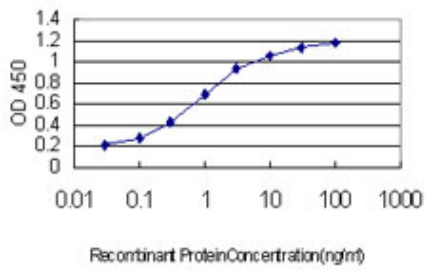


Immunofluorescence of monoclonal antibody to RNF12 on HeLa cell. [antibody concentration 30 ug/ml]

Immunoprecipitation of RNF12 transfected lysate using anti-RNF12 monoclonal antibody and Protein A Magnetic Bead ([U0007](#)), and immunoblotted with RNF12 MaxPab



rabbit polyclonal antibody.



Detection limit for recombinant GST tagged RNF12 is approximately 0.03ng/ml as a capture antibody.

Please note: All products are 'FOR RESEARCH USE ONLY. NOT FOR USE IN DIAGNOSTIC OR THERAPEUTIC PROCEDURES'.