

RFWD2 Antibody (monoclonal) (M01)

Mouse monoclonal antibody raised against a partial recombinant RFWD2.

Catalog # AT3625a

Product Information

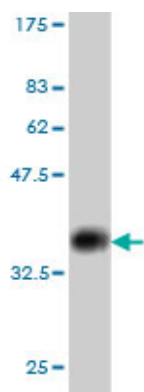
Application	WB, IF, E
Primary Accession	Q8NHY2
Other Accession	NM_022457
Reactivity	Human, Mouse
Host	mouse
Clonality	monoclonal
Isotype	IgG2b Kappa
Clone Names	1E5
Calculated MW	80474

Additional Information

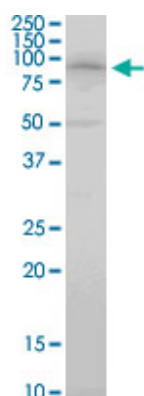
Gene ID	64326
Other Names	E3 ubiquitin-protein ligase RFWD2, 632-, Constitutive photomorphogenesis protein 1 homolog, hCOP1, RING finger and WD repeat domain protein 2, RING finger protein 200, RFWD2, COP1, RNF200
Target/Specificity	RFWD2 (NP_071902, 632 a.a. ~ 731 a.a) partial recombinant protein with GST tag. MW of the GST tag alone is 26 KDa.
Dilution	WB~~1:500~1000 IF~~1:50~200 E~~N/A
Format	Clear, colorless solution in phosphate buffered saline, pH 7.2 .
Storage	Store at -20°C or lower. Aliquot to avoid repeated freezing and thawing.
Precautions	RFWD2 Antibody (monoclonal) (M01) is for research use only and not for use in diagnostic or therapeutic procedures.

References

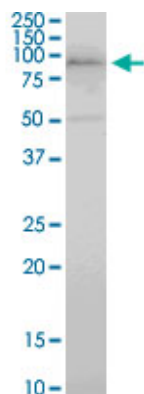
An approach based on a genome-wide association study reveals candidate loci for narcolepsy. Shimada M, et al. Hum Genet, 2010 Oct. PMID 20677014. Personalized smoking cessation: interactions between nicotine dose, dependence and quit-success genotype score. Rose JE, et al. Mol Med, 2010 Jul-Aug. PMID 20379614. E3 ubiquitin ligase COP1 regulates the stability and functions of MTA1. Li DQ, et al. Proc Natl Acad Sci U S A, 2009 Oct 13. PMID 19805145. COP1 contributes to UVB-induced signaling in human keratinocytes. Kiny? A, et al. J Invest Dermatol, 2010 Feb. PMID 19741714. COP1 functions as a FoxO1 ubiquitin E3 ligase to regulate FoxO1-mediated gene expression. Kato S, et al. J Biol Chem, 2008 Dec 19. PMID 18815134.



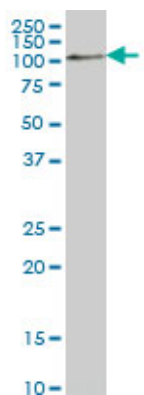
Antibody Reactive Against Recombinant Protein. Western Blot detection against Immunogen (36.74 KDa) .



RFWD2 monoclonal antibody (M01), clone 1E4. Western Blot analysis of RFWD2 expression in A-431.

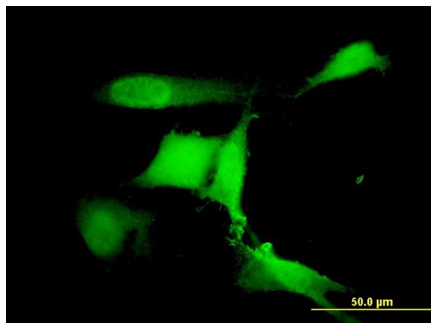
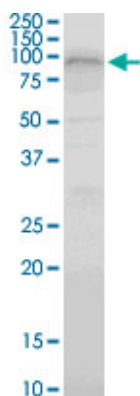


RFWD2 monoclonal antibody (M01), clone 1E4. Western Blot analysis of RFWD2 expression in Jurkat.

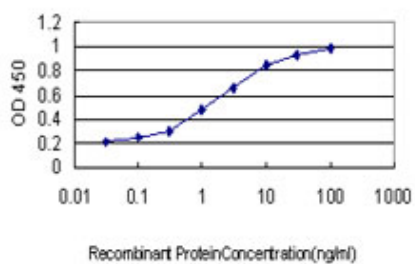


RFWD2 monoclonal antibody (M01), clone 1E4 Western Blot analysis of RFWD2 expression in NIH/3T3 (Cat # AT3625a)

RFWD2 monoclonal antibody (M01), clone 1E4. Western Blot analysis of RFWD2 expression in K-562.



Immunofluorescence of monoclonal antibody to RFWD2 on NIH/3T3 cell. [antibody concentration 10 ug/ml]



Detection limit for recombinant GST tagged RFWD2 is approximately 0.1ng/ml as a capture antibody.

Please note: All products are 'FOR RESEARCH USE ONLY. NOT FOR USE IN DIAGNOSTIC OR THERAPEUTIC PROCEDURES'.