

## RFFL Antibody (monoclonal) (M01)

Mouse monoclonal antibody raised against a partial recombinant RFFL.

Catalog # AT3622a

### Product Information

---

<b>Application</b>	WB, E
<b>Primary Accession</b>	<a href="#">Q8WZ73</a>
<b>Other Accession</b>	<a href="#">NM_001017368</a>
<b>Reactivity</b>	Human
<b>Host</b>	mouse
<b>Clonality</b>	monoclonal
<b>Isotype</b>	IgG2a Kappa
<b>Clone Names</b>	3A4
<b>Calculated MW</b>	40514

### Additional Information

---

<b>Gene ID</b>	117584
<b>Other Names</b>	E3 ubiquitin-protein ligase rififylin, 632-, Caspase regulator CARP2, Caspases-8 and -10-associated RING finger protein 2, CARP-2, FYVE-RING finger protein Sakura, Fring, RING finger and FYVE-like domain-containing protein 1, RING finger protein 189, RING finger protein 34-like, RFFL ( <a href="#">HGNC:24821</a> ), RNF189, RNF34L
<b>Target/Specificity</b>	RFFL (NP_001017368, 2 a.a. ~ 99 a.a) partial recombinant protein with GST tag. MW of the GST tag alone is 26 KDa.
<b>Dilution</b>	WB~~1:500~1000 E~~N/A
<b>Format</b>	Clear, colorless solution in phosphate buffered saline, pH 7.2 .
<b>Storage</b>	Store at -20°C or lower. Aliquot to avoid repeated freezing and thawing.
<b>Precautions</b>	RFFL Antibody (monoclonal) (M01) is for research use only and not for use in diagnostic or therapeutic procedures.

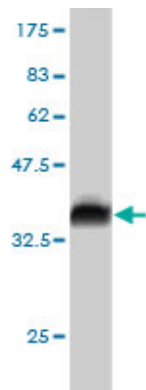
### References

---

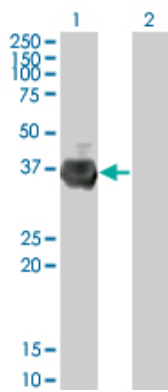
An approach based on a genome-wide association study reveals candidate loci for narcolepsy. Shimada M, et al. Hum Genet, 2010 Oct. PMID 20677014. Association between genetic variants in VEGF, ERCC3 and occupational benzene haematotoxicity. Hosgood HD 3rd, et al. Occup Environ Med, 2009 Dec. PMID 19773279. Common variants at ten loci influence QT interval duration in the QTGEN Study. Newton-Cheh C, et al. Nat Genet, 2009 Apr. PMID 19305408. CARP-2 is an endosome-associated ubiquitin ligase for RIP and regulates TNF-induced NF-kappaB activation. Liao W, et al. Curr Biol, 2008 May 6. PMID 18450452. CARPs

enhance p53 turnover by degrading 14-3-3sigma and stabilizing MDM2. Yang W, et al. Cell Cycle, 2008 Mar 1. PMID 18382127.

## Images

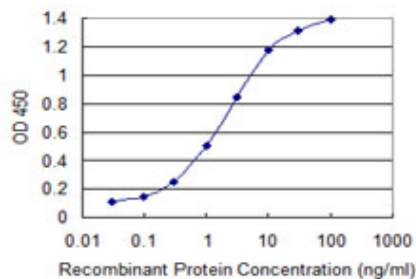


Antibody Reactive Against Recombinant Protein. Western Blot detection against Immunogen (36.52 KDa) .

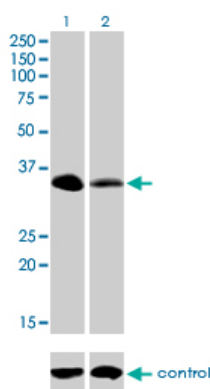


Western Blot analysis of RFFL expression in transfected 293T cell line by RFFL monoclonal antibody (M01), clone 3A4.

Lane 1: RFFL transfected lysate(36.6 KDa).  
Lane 2: Non-transfected lysate.



Detection limit for recombinant GST tagged RFFL is 0.03 ng/ml as a capture antibody.



Western blot analysis of RFFL over-expressed 293 cell line, cotransfected with RFFL Validated Chimera RNAi (Cat # AT3622a )

Please note: All products are 'FOR RESEARCH USE ONLY. NOT FOR USE IN DIAGNOSTIC OR THERAPEUTIC PROCEDURES'.