

## RBAF600 Antibody (monoclonal) (M01)

Mouse monoclonal antibody raised against a partial recombinant RBAF600.

Catalog # AT3584a

### Product Information

---

<b>Application</b>	WB, IF, E
<b>Primary Accession</b>	<a href="#">Q5T4S7</a>
<b>Other Accession</b>	<a href="#">NM_020765</a>
<b>Reactivity</b>	Human
<b>Host</b>	Mouse
<b>Clonality</b>	monoclonal
<b>Isotype</b>	IgG2b Kappa
<b>Clone Names</b>	2D12
<b>Calculated MW</b>	573841

### Additional Information

---

<b>Gene ID</b>	23352
<b>Other Names</b>	E3 ubiquitin-protein ligase UBR4, 632-, 600 kDa retinoblastoma protein-associated factor, N-recognin-4, Retinoblastoma-associated factor of 600 kDa, RBAF600, p600, Zinc finger UBR1-type protein 1, UBR4, KIAA0462, KIAA1307, RBAF600, ZUBR1
<b>Target/Specificity</b>	RBAF600 (NP_065816, 94 a.a. ~ 190 a.a) partial recombinant protein with GST tag. MW of the GST tag alone is 26 KDa.
<b>Dilution</b>	WB~~1:500~1000 IF~~1:50~200 E~~N/A
<b>Format</b>	Clear, colorless solution in phosphate buffered saline, pH 7.2 .
<b>Storage</b>	Store at -20°C or lower. Aliquot to avoid repeated freezing and thawing.
<b>Precautions</b>	RBAF600 Antibody (monoclonal) (M01) is for research use only and not for use in diagnostic or therapeutic procedures.

### Background

---

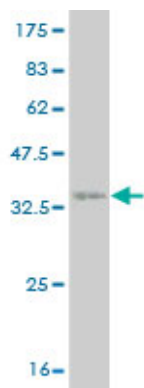
The protein encoded by this gene is an E3 ubiquitin-protein ligase that interacts with the retinoblastoma-associated protein in the nucleus and with calcium-bound calmodulin in the cytoplasm. The encoded protein appears to be a cytoskeletal component in the cytoplasm and part of the chromatin scaffold in the nucleus. In addition, this protein is a target of the human papillomavirus type 16 E7 oncoprotein.

### References

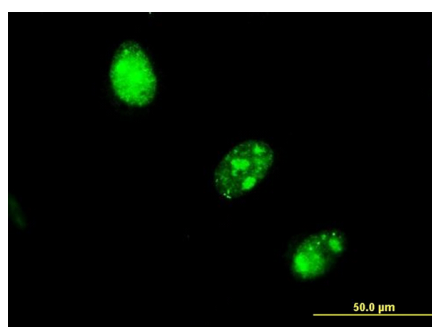
---

Personalized smoking cessation: interactions between nicotine dose, dependence and quit-success genotype score. Rose JE, et al. Mol Med, 2010 Jul-Aug. PMID 20379614. Large-scale mapping of human protein-protein interactions by mass spectrometry. Ewing RM, et al. Mol Syst Biol, 2007. PMID 17353931. The response of autologous T cells to a human melanoma is dominated by mutated neoantigens. Lennerz V, et al. Proc Natl Acad Sci U S A, 2005 Nov 1. PMID 16247014. p600, a unique protein required for membrane morphogenesis and cell survival. Nakatani Y, et al. Proc Natl Acad Sci U S A, 2005 Oct 18. PMID 16214886. Association of the human papillomavirus type 16 E7 oncoprotein with the 600-kDa retinoblastoma protein-associated factor, p600. Huh KW, et al. Proc Natl Acad Sci U S A, 2005 Aug 9. PMID 16061792.

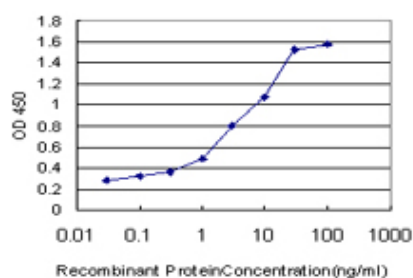
## Images



Antibody Reactive Against Recombinant Protein. Western Blot detection against Immunogen (36.41 KDa) .



Immunofluorescence of monoclonal antibody to RBAF600 on HeLa cell. [antibody concentration 10 ug/ml]



Detection limit for recombinant GST tagged RBAF600 is approximately 0.1 ng/ml as a capture antibody.

Please note: All products are 'FOR RESEARCH USE ONLY. NOT FOR USE IN DIAGNOSTIC OR THERAPEUTIC PROCEDURES'.