

## PTRF Antibody (monoclonal) (M02)

Mouse monoclonal antibody raised against a partial recombinant PTRF.

Catalog # AT3498a

### Product Information

---

<b>Application</b>	IHC
<b>Primary Accession</b>	<a href="#">Q6NZI2</a>
<b>Other Accession</b>	<a href="#">NM_012232</a>
<b>Reactivity</b>	Human
<b>Host</b>	mouse
<b>Clonality</b>	monoclonal
<b>Isotype</b>	IgG2b Kappa
<b>Clone Names</b>	1F7
<b>Calculated MW</b>	43476

### Additional Information

---

<b>Gene ID</b>	284119
<b>Other Names</b>	Polymerase I and transcript release factor, Cavin-1, PTRF {ECO:0000312 EMBL:AAH661231}
<b>Target/Specificity</b>	PTRF (NP_036364, 233 a.a. ~ 321 a.a) partial recombinant protein with GST tag. MW of the GST tag alone is 26 KDa.
<b>Dilution</b>	IHC~~1:100~500
<b>Format</b>	Clear, colorless solution in phosphate buffered saline, pH 7.2 .
<b>Storage</b>	Store at -20°C or lower. Aliquot to avoid repeated freezing and thawing.
<b>Precautions</b>	PTRF Antibody (monoclonal) (M02) is for research use only and not for use in diagnostic or therapeutic procedures.

### Background

---

This gene encodes a protein that enables the dissociation of paused ternary polymerase I transcription complexes from the 3' end of pre-rRNA transcripts. This protein regulates rRNA transcription by promoting the dissociation of transcription complexes and the reinitiation of polymerase I on nascent rRNA transcripts. This protein also localizes to caveolae at the plasma membrane and is thought to play a critical role in the formation of caveolae and the stabilization of caveolins. This protein translocates from caveolae to the cytoplasm after insulin stimulation. Caveolae contain truncated forms of this protein and may be the site of phosphorylation-dependent proteolysis. This protein is also thought to modify lipid metabolism and insulin-regulated gene expression. Mutations in this gene result in a disorder characterized by generalized lipodystrophy and muscular dystrophy.

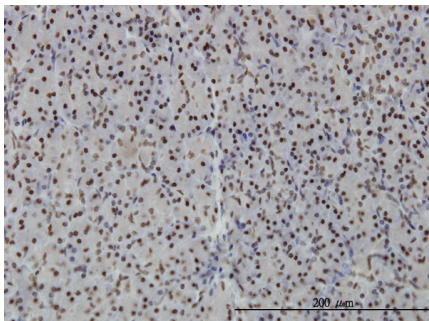
## References

---

1.SDPR induces membrane curvature and functions in the formation of caveolae.Hansen CG, Bright NA, Howard G, Nichols BJ.Nat Cell Biol. 2009 Jul;11(7):807-14. Epub 2009 Jun 14.

## Images

---



Immunoperoxidase of monoclonal antibody to PTRF on formalin-fixed paraffin-embedded human pancreas. [antibody concentration 3 ug/ml]

Please note: All products are 'FOR RESEARCH USE ONLY. NOT FOR USE IN DIAGNOSTIC OR THERAPEUTIC PROCEDURES'.