

## PPP1R14A Antibody (monoclonal) (M01)

Mouse monoclonal antibody raised against a full length recombinant PPP1R14A.

Catalog # AT3408a

### Product Information

---

Application	WB, E
Primary Accession	<a href="#">Q96A00</a>
Other Accession	<a href="#">BC021089</a>
Reactivity	Human
Host	mouse
Clonality	monoclonal
Isotype	IgG1 Kappa
Clone Names	3A7
Calculated MW	16693

### Additional Information

---

Gene ID	94274
Other Names	Protein phosphatase 1 regulatory subunit 14A, 17 kDa PKC-potentiated inhibitory protein of PP1, Protein kinase C-potentiated inhibitor protein of 17 kDa, CPI-17, PPP1R14A, CPI17, PPP1INL
Target/Specificity	PPP1R14A (AAH21089, 1 a.a. ~ 147 a.a) full-length recombinant protein with GST tag. MW of the GST tag alone is 26 KDa.
Dilution	WB~~1:500~1000 E~~N/A
Format	Clear, colorless solution in phosphate buffered saline, pH 7.2 .
Storage	Store at -20°C or lower. Aliquot to avoid repeated freezing and thawing.
Precautions	PPP1R14A Antibody (monoclonal) (M01) is for research use only and not for use in diagnostic or therapeutic procedures.

### Background

---

PPP1R14A is a phosphorylation-dependent inhibitor of smooth muscle myosin phosphatase (see MIM 603768). Inhibition leads to increased myosin phosphorylation and enhances smooth muscle contraction in the absence of increased intracellular Ca(2+) concentration.

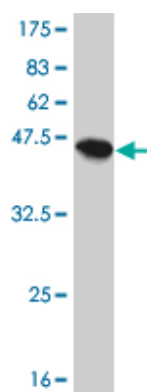
### References

---

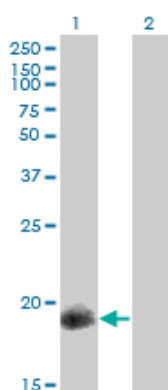
Genome-wide association and replication studies identify four variants associated with prostate cancer susceptibility. Gudmundsson J, et al. Nat Genet, 2009 Oct. PMID 19767754. Functional inactivation of

NF2/merlin in human mesothelioma. Thurneysen C, et al. Lung Cancer, 2009 May. PMID 18835652. CPI-17 silencing-reduced responsiveness in control and TNF-alpha-treated human bronchi. Morin C, et al. Am J Respir Cell Mol Biol, 2008 Dec. PMID 18757304. Protein microarray analysis identifies human cellular prion protein interactors. Satoh J, et al. Neuropathol Appl Neurobiol, 2009 Feb. PMID 18482256. Up-regulation of myometrial RHO effector proteins (PKN1 and DIAPH1) and CPI-17 (PPP1R14A) phosphorylation in human pregnancy is associated with increased GTP-RHOA in spontaneous preterm labor. Lartey J, et al. Biol Reprod, 2007 Jun. PMID 17301291.

## Images

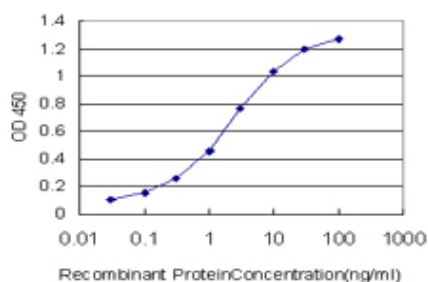


Antibody Reactive Against Recombinant Protein. Western Blot detection against Immunogen (41.91 KDa) .



Western Blot analysis of PPP1R14A expression in transfected 293T cell line by PPP1R14A monoclonal antibody (M01), clone 3A7.

Lane 1: PPP1R14A transfected lysate (16.7 KDa).  
Lane 2: Non-transfected lysate.



Detection limit for recombinant GST tagged PPP1R14A is approximately 0.1 ng/ml as a capture antibody.

Please note: All products are 'FOR RESEARCH USE ONLY. NOT FOR USE IN DIAGNOSTIC OR THERAPEUTIC PROCEDURES'.