

# POLR2H Antibody (monoclonal) (M01)

Mouse monoclonal antibody raised against a full length recombinant POLR2H.

Catalog # AT3376a

## Product Information

---

<b>Application</b>	WB, E
<b>Primary Accession</b>	<a href="#">P52434</a>
<b>Other Accession</b>	<a href="#">BC000739</a>
<b>Reactivity</b>	Human
<b>Host</b>	mouse
<b>Clonality</b>	monoclonal
<b>Isotype</b>	IgG1 Kappa
<b>Clone Names</b>	3G6-1A4
<b>Calculated MW</b>	17143

## Additional Information

---

<b>Gene ID</b>	5437
<b>Other Names</b>	DNA-directed RNA polymerases I, II, and III subunit RPABC3, RNA polymerases I, II, and III subunit ABC3, DNA-directed RNA polymerase II subunit H, DNA-directed RNA polymerases I, II, and III 171 kDa polypeptide, RPB17, RPB8 homolog, hRPB8, POLR2H
<b>Target/Specificity</b>	POLR2H (AAH00739, 1 a.a. ~ 150 a.a) full-length recombinant protein with GST tag. MW of the GST tag alone is 26 KDa.
<b>Dilution</b>	WB~~1:500~1000 E~~N/A
<b>Format</b>	Clear, colorless solution in phosphate buffered saline, pH 7.2 .
<b>Storage</b>	Store at -20°C or lower. Aliquot to avoid repeated freezing and thawing.
<b>Precautions</b>	POLR2H Antibody (monoclonal) (M01) is for research use only and not for use in diagnostic or therapeutic procedures.

## Background

---

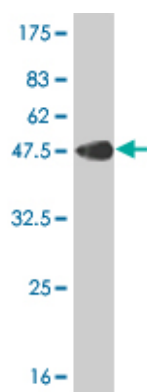
This gene encodes one of the essential subunits of RNA polymerase II that is shared by the other two eukaryotic DNA-directed RNA polymerases, I and III.

## References

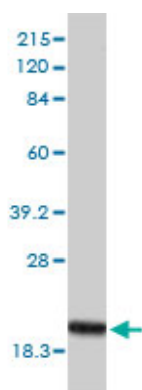
---

1.Examining the Complexity of Human RNA Polymerase Complexes using HaloTag Technology Coupled to Label Free Quantitative Proteomics.Daniels DL, Mendez J, Mosley AL, Ramisetty SR, Murphy N, Benink H,

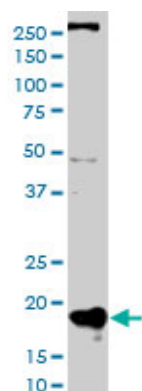
## Images



Antibody Reactive Against Recombinant Protein. Western Blot detection against Immunogen (42.24 KDa) .



POLR2H monoclonal antibody (M01), clone 3G6-1A4  
Western Blot analysis of POLR2H expression in Hela ( (Cat # AT3376a )



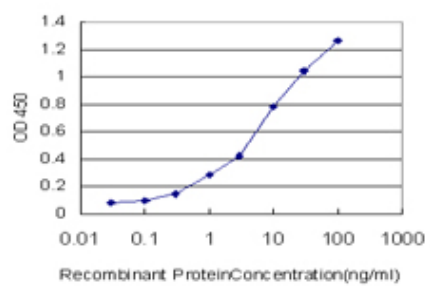
POLR2H monoclonal antibody (M01), clone 3G6-1A4.  
Western Blot analysis of POLR2H expression in HepG2 ( (Cat # AT3376a )



Western Blot analysis of POLR2H expression in transfected 293T cell line by POLR2H monoclonal antibody (M01), clone 3G6-1A4.

Lane 1: POLR2H transfected lysate(17.1 KDa).  
Lane 2: Non-transfected lysate.

Detection limit for recombinant GST tagged POLR2H is approximately 0.3ng/ml as a capture antibody.



Please note: All products are 'FOR RESEARCH USE ONLY. NOT FOR USE IN DIAGNOSTIC OR THERAPEUTIC PROCEDURES'.